

# Symmetric DiMethyl-Histone H3-R26 Rabbit pAb

**Catalog No.: A3153**

## Basic Information

**Observed MW**

17kDa

**Calculated MW**

15kDa

**Category**

Primary antibody

**Applications**

ELISA,WB,IF/ICC

**Cross-Reactivity**

Human, Mouse, Rat, Other (Wide Range Predicted)

## Background

Histones are basic nuclear proteins that are responsible for the nucleosome structure of the chromosomal fiber in eukaryotes. Two molecules of each of the four core histones (H2A, H2B, H3, and H4) form an octamer, around which approximately 146 bp of DNA is wrapped in repeating units, called nucleosomes. The linker histone, H1, interacts with linker DNA between nucleosomes and functions in the compaction of chromatin into higher order structures. This gene is intronless and encodes a replication-dependent histone that is a member of the histone H3 family. Transcripts from this gene lack polyA tails but instead contain a palindromic termination element. This gene is found in the small histone gene cluster on chromosome 6p22-p21.3.

## Recommended Dilutions

<b>WB</b>	1:100 - 1:500
<b>IF/ICC</b>	1:50 - 1:200

## Immunogen Information

**Gene ID**

8290/8350

**Swiss Prot**

Q16695/P68431

**Immunogen**

A synthetic symmetric dimethylated peptide around R26 of human histone H3 (NP\_003520.1).

**Synonyms**

H3/j; H3C1; H3C2; H3C3; H3C4; H3C6; H3C7; H3C8; H3FJ; H3C10; H3C11; HIST1H3J; Symmetric DiMethyl-Histone H3-R26

## Contact

	400-999-6126
	cn.market@abclonal.com.cn
	<a href="http://www.abclonal.com.cn">www.abclonal.com.cn</a>

## Product Information

**Source**

Rabbit

**Isotype**

IgG

**Purification**

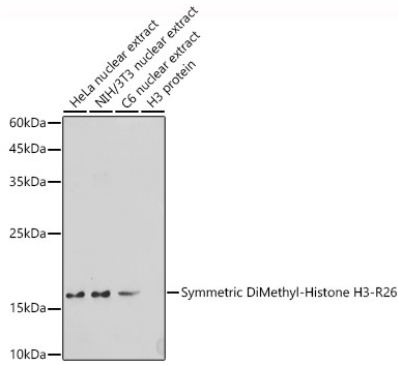
Affinity purification

**Storage**

Store at -20°C. Avoid freeze / thaw cycles.

Buffer: PBS with 0.01% thimerosal, 50% glycerol, pH7.3.

## Validation Data



Western blot analysis of various lysates using Symmetric DiMethyl-Histone H3-R26 Rabbit pAb (A3153) at 1:500 dilution.

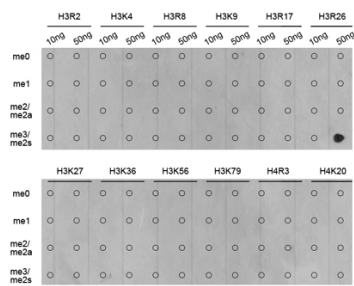
Secondary antibody: HRP Goat Anti-Rabbit IgG (H+L) (AS014) at 1:10000 dilution.

Lysates/proteins: 25µg per lane.

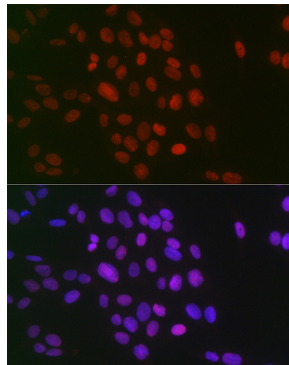
Blocking buffer: 3% nonfat dry milk in TBST.

Detection: ECL Basic Kit (RM00020).

Exposure time: 60s.



Dot-blot analysis of all sorts of methylation peptides using Symmetric DiMethyl-Histone H3-R26 antibody (A3153).



Immunofluorescence analysis of U-2 OS cells using Symmetric DiMethyl-Histone H3-R26 Rabbit pAb (A3153) at dilution of 1:100 (40x lens). Secondary antibody: Cy3 Goat Anti-Rabbit IgG (H+L) (AS007) at 1:500 dilution. Blue: DAPI for nuclear staining.