

MonoMethyl-Histone H4-R3 Rabbit pAb

Catalog No.: A3158

Basic Information

Observed MW

13kDa

Calculated MW

11kDa

Category

Primary antibody

Applications

ELISA, WB, IHC-P, IF/ICC

Cross-Reactivity

Human, Mouse, Rat, Other (Wide Range Predicted)

Background

Histones are basic nuclear proteins that are responsible for the nucleosome structure of the chromosomal fiber in eukaryotes. Two molecules of each of the four core histones (H2A, H2B, H3, and H4) form an octamer, around which approximately 146 bp of DNA is wrapped in repeating units, called nucleosomes. The linker histone, H1, interacts with linker DNA between nucleosomes and functions in the compaction of chromatin into higher order structures. This gene is intronless and encodes a replication-dependent histone that is a member of the histone H4 family. Transcripts from this gene lack polyA tails but instead contain a palindromic termination element. This gene is found in the large histone gene cluster on chromosome 6.

Recommended Dilutions

WB	1:500 - 1:2000
IHC-P	1:50 - 1:200
IF/ICC	1:50 - 1:200

Immunogen Information

Gene ID

8359

Swiss Prot

P62805

Immunogen

A synthetic monomethylated peptide around R3 of human Histone H4 (NP_003529.1).

Synonyms

H4/I; H4C1; H4C3; H4C4; H4C5; H4C6; H4C8; H4C9; H4F1; H4-16; H4C11; H4C12; H4C13; H4C14; H4C15; H4C16; HIST1H4B; MonoMethyl-Histone H4-R3

Contact

☎ | 400-999-6126

✉ | cn.market@abclonal.com.cn

🌐 | www.abclonal.com.cn

Product Information

Source

Rabbit

Isotype

IgG

Purification

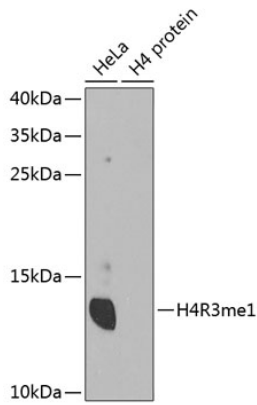
Affinity purification

Storage

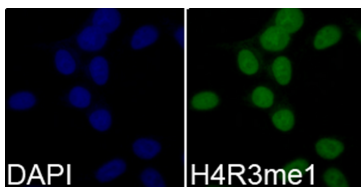
Store at -20°C. Avoid freeze / thaw cycles.

Buffer: PBS with 0.01% thimerosal, 50% glycerol, pH7.3.

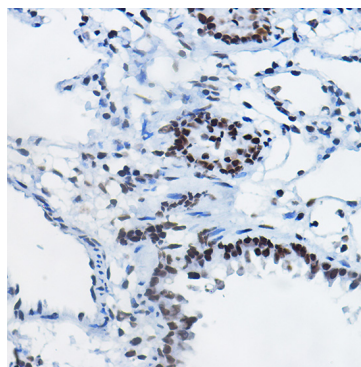
Validation Data



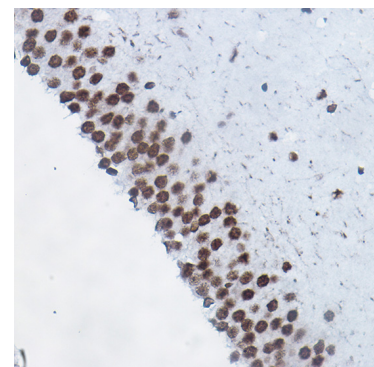
Western blot analysis of various lysates using MonoMethyl-Histone H4-R3 Rabbit pAb (A3158).
Secondary antibody: HRP Goat Anti-Rabbit IgG (H+L) (AS014) at 1:10000 dilution.
Lysates/proteins: 25µg per lane.
Blocking buffer: 3% nonfat dry milk in TBST.



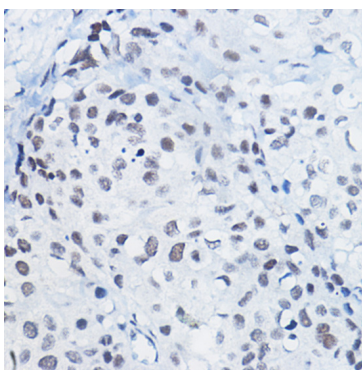
Immunofluorescence analysis of 293T cells using MonoMethyl-Histone H4-R3 Rabbit pAb (A3158). Blue: DAPI for nuclear staining.



Immunohistochemistry analysis of paraffin-embedded rat lung using MonoMethyl-Histone H4-R3 Rabbit pAb (A3158) at dilution of 1:100 (40x lens). Perform high pressure antigen retrieval with 10 mM citrate buffer pH 6.0 before commencing with IHC staining protocol.



Immunohistochemistry analysis of paraffin-embedded rat brain using MonoMethyl-Histone H4-R3 Rabbit pAb (A3158) at dilution of 1:100 (40x lens). Perform high pressure antigen retrieval with 10 mM citrate buffer pH 6.0 before commencing with IHC staining protocol.



Immunohistochemistry analysis of paraffin-embedded human breast cancer using MonoMethyl-Histone H4-R3 Rabbit pAb (A3158) at dilution of 1:100 (40x lens). Perform high pressure antigen retrieval with 10 mM citrate buffer pH 6.0 before commencing with IHC staining protocol.