

CSF2RA Rabbit pAb

Catalog No.: A3167

Basic Information

Observed MW

Calculated MW

46kDa

Category

Primary antibody

Applications

IF/ICC,ELISA

Cross-Reactivity

Human, Mouse

Background

The protein encoded by this gene is the alpha subunit of the heterodimeric receptor for colony stimulating factor 2, a cytokine which controls the production, differentiation, and function of granulocytes and macrophages. The encoded protein is a member of the cytokine family of receptors. This gene is found in the pseudoautosomal region (PAR) of the X and Y chromosomes. Multiple transcript variants encoding different isoforms have been found for this gene, with some of the isoforms being membrane-bound and others being soluble.

Recommended Dilutions

IF/ICC 1:50 - 1:200

ELISA Recommended starting concentration is 1 µg/mL. Please optimize the concentration based on your specific assay requirements.

Immunogen Information

Gene ID

1438

Swiss Prot

P15509

Immunogen

Recombinant fusion protein containing a sequence corresponding to amino acids 23-150 of human CSF2RA (NP_001155001.1).

Synonyms

GMR; CD116; CSF2R; SMDP4; CDw116; CSF2RX; CSF2RY; GMCSFR; CSF2RAX; CSF2RAY; alphaGMR; GMR-alpha; GMCSFR-alpha; GM-CSF-R-alpha; CSF2RA

Contact

☎ | 400-999-6126

✉ | cn.market@abclonal.com.cn

🌐 | www.abclonal.com.cn

Product Information

Source

Rabbit

Isotype

IgG

Purification

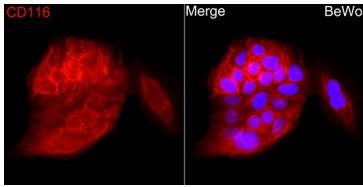
Affinity purification

Storage

Store at -20°C. Avoid freeze / thaw cycles.

Buffer: PBS with 0.09% Sodium azide,50% glycerol,pH7.3.

Validation Data



Immunofluorescence analysis of Bewo cells using CSF2RA Rabbit pAb (A3167) at dilution of 1:200 (40x lens). Secondary antibody: Cy3-conjugated Goat anti-Rabbit IgG (H+L) (AS007) at 1:500 dilution. Blue: DAPI for nuclear staining.