

# FAM160B2 Rabbit pAb

Catalog No.: A3192

## Basic Information

### Observed MW

82kDa

### Calculated MW

82kDa

### Category

Primary antibody

### Applications

ELISA, WB

### Cross-Reactivity

Human, Mouse, Rat

## Background

Able to activate MAPK/ERK and TGFB signaling pathways. May regulate the activity of genes involved in intestinal barrier function and immunoprotective inflammation (By similarity). May play a role in cell proliferation.

## Recommended Dilutions

WB 1:500 - 1:2000

## Immunogen Information

### Gene ID

64760

### Swiss Prot

Q86V87

### Immunogen

A synthetic peptide corresponding to a sequence within amino acids 420-520 of human FAM160B2 (NP\_073586.5).

### Synonyms

FAI16; RAI16; FAM160B2; RAM160B2

## Contact

 | 400-999-6126

 | [cn.market@abclonal.com.cn](mailto:cn.market@abclonal.com.cn)

 | [www.abclonal.com.cn](http://www.abclonal.com.cn)

## Product Information

### Source

Rabbit

### Isotype

IgG

### Purification

Affinity purification

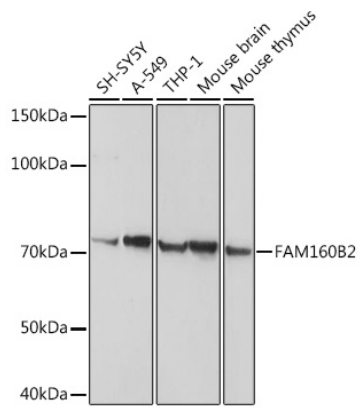
### Storage

Store at -20°C. Avoid freeze / thaw cycles.

Buffer: PBS with 0.02% sodium azide, 50% glycerol, pH 7.3.

## Validation Data

---



Western blot analysis of extracts of various cell lines, using FAM160B2 antibody (A3192) at 1:1000 dilution.

Secondary antibody: HRP Goat Anti-Rabbit IgG (H+L) (AS014) at 1:10000 dilution.

Lysates/proteins: 25µg per lane.

Blocking buffer: 3% nonfat dry milk in TBST.

Detection: ECL Basic Kit (RM00020).

Exposure time: 10s.