

# SETD2 Rabbit pAb

Catalog No.: A3194

18 Publications

## Basic Information

### Observed MW

288kDa

### Calculated MW

288kDa

### Category

Primary antibody

### Applications

WB, IHC-P, IF/ICC, IP, ELISA

### Cross-Reactivity

Human, Mouse, Rat

## Background

Huntington's disease (HD), a neurodegenerative disorder characterized by loss of striatal neurons, is caused by an expansion of a polyglutamine tract in the HD protein huntingtin. This gene encodes a protein belonging to a class of huntingtin interacting proteins characterized by WW motifs. This protein is a histone methyltransferase that is specific for lysine-36 of histone H3, and methylation of this residue is associated with active chromatin. This protein also contains a novel transcriptional activation domain and has been found associated with hyperphosphorylated RNA polymerase II.

## Recommended Dilutions

<b>WB</b>	1:500 - 1:1000
-----------	----------------

<b>IHC-P</b>	1:500 - 1:1000
--------------	----------------

<b>IF/ICC</b>	1:50 - 1:200
---------------	--------------

<b>IP</b>	0.5µg-4µg antibody for 400µg-600µg extracts of whole cells
-----------	--

<b>ELISA</b>	Recommended starting concentration is 1 µg/mL. Please optimize the concentration based on your specific assay requirements.
--------------	--

## Contact

		400-999-6126
--	--	--------------

		<a href="mailto:cn.market@abclonal.com.cn">cn.market@abclonal.com.cn</a>
--	--	--

		<a href="http://www.abclonal.com.cn">www.abclonal.com.cn</a>
--	--	--

## Immunogen Information

### Gene ID

29072

### Swiss Prot

Q9BYW2

### Immunogen

Synthetic peptide. This information is considered to be commercially sensitive.

### Synonyms

LLS; HYPB; SET2; HIF-1; HIP-1; KMT3A; MRD70; RAPAS; HBP231; HSPC069; p231HBP; SETD2

## Product Information

### Source

Rabbit

### Isotype

IgG

### Purification

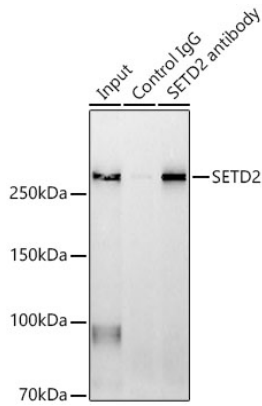
Affinity purification

### Storage

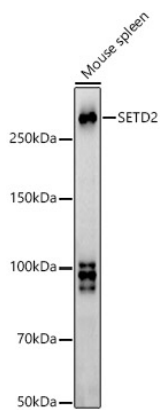
Store at -20°C. Avoid freeze / thaw cycles.

Buffer: PBS containing 50% glycerol, preserved with proclin300 or sodium azide (as specified on the Certificate of Analysis), pH 7.3.

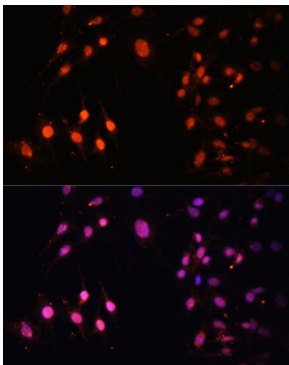
## Validation Data



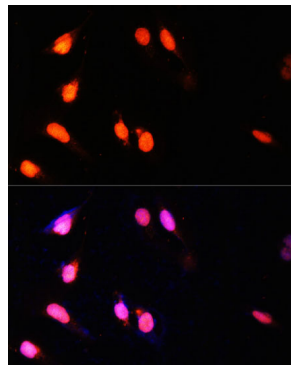
Immunoprecipitation analysis of 600 µg extracts of Mouse spleen using 3 µg SETD2 antibody (A3194). Western blot was performed from the immunoprecipitate using SETD2 antibody (A3194) at a dilution of 1:1000.



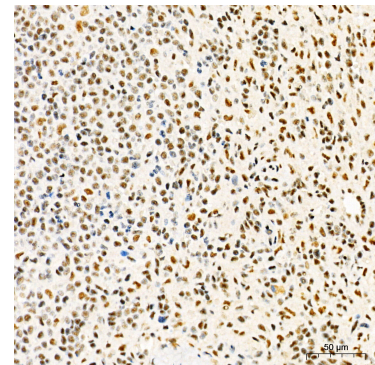
Western blot analysis of lysates from Mouse spleen, using SETD2 Rabbit pAb (A3194) at 1:900 dilution. Secondary antibody: HRP-conjugated Goat anti-Rabbit IgG (H+L) (AS014) at 1:10000 dilution. Lysates/proteins: 25µg per lane. Blocking buffer: 3% nonfat dry milk in TBST. Detection: ECL Basic Kit (RM00020). Exposure time: 90s.



Immunofluorescence analysis of C6 cells using SETD2 Rabbit pAb (A3194) at dilution of 1:100 (40x lens). Secondary antibody: Cy3-conjugated Goat anti-Rabbit IgG (H+L) (AS007) at 1:500 dilution. Blue: DAPI for nuclear staining.



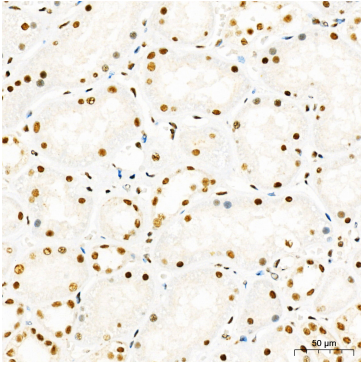
Immunofluorescence analysis of U-2 OS cells using SETD2 Rabbit pAb (A3194) at dilution of 1:100 (40x lens). Secondary antibody: Cy3-conjugated Goat anti-Rabbit IgG (H+L) (AS007) at 1:500 dilution. Blue: DAPI for nuclear staining.



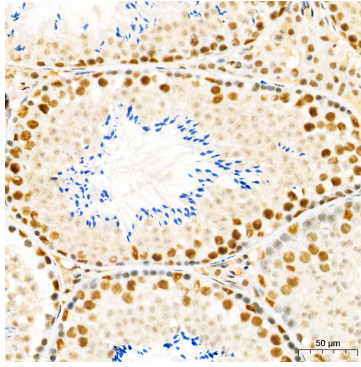
Immunohistochemistry analysis of paraffin-embedded Human spleen tissue using SETD2 Rabbit pAb (A3194) at a dilution of 1:1000 (40x lens). High pressure antigen retrieval performed with 0.01M Citrate buffer (pH 6.0) prior to IHC staining.

## Validation Data

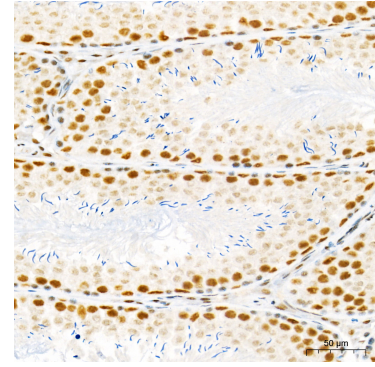
---



Immunohistochemistry analysis of paraffin-embedded Human kidney tissue using SETD2 Rabbit pAb (A3194) at a dilution of 1:1000 (40x lens). High pressure antigen retrieval performed with 0.01M Citrate buffer (pH 6.0) prior to IHC staining.



Immunohistochemistry analysis of paraffin-embedded Mouse testis tissue using SETD2 Rabbit pAb (A3194) at a dilution of 1:1000 (40x lens). High pressure antigen retrieval performed with 0.01M Citrate buffer (pH 6.0) prior to IHC staining.



Immunohistochemistry analysis of paraffin-embedded Rat testis tissue using SETD2 Rabbit pAb (A3194) at a dilution of 1:1000 (40x lens). High pressure antigen retrieval performed with 0.01M Citrate buffer (pH 6.0) prior to IHC staining.