

# IRF6 Rabbit mAb

Catalog No.: A3209

Recombinant

2 Publications

## Basic Information

### Observed MW

68kDa

### Calculated MW

53kDa

### Category

Primary antibody

### Applications

WB,IF/ICC,IP,ELISA

### Cross-Reactivity

Human, Mouse, Rat

### CloneNo number

ARC1928

## Background

This gene encodes a member of the interferon regulatory transcription factor (IRF) family. Family members share a highly-conserved N-terminal helix-turn-helix DNA-binding domain and a less conserved C-terminal protein-binding domain. The encoded protein may be a transcriptional activator. Mutations in this gene can cause van der Woude syndrome and popliteal pterygium syndrome. Mutations in this gene are also associated with non-syndromic orofacial cleft type 6. Alternate splicing results in multiple transcript variants.

## Recommended Dilutions

**WB** 1:500 - 1:1000**IF/ICC** 1:50 - 1:200**IP** 0.5µg-4µg antibody for  
200µg-400µg extracts of  
whole cells**ELISA** Recommended starting  
concentration is 1 µg/mL.  
Please optimize the  
concentration based on  
your specific assay  
requirements.

## Contact

 | 400-999-6126 | [cn.market@abclonal.com.cn](mailto:cn.market@abclonal.com.cn) | [www.abclonal.com.cn](http://www.abclonal.com.cn)

## Immunogen Information

### Gene ID

3664

### Swiss Prot

O14896

### Immunogen

Synthetic peptide. This information is considered to be commercially sensitive.

### Synonyms

LPS; PIT; PPS; VWS; OFC6; PPS1; VWS1; IRF6

## Product Information

### Source

Rabbit

### Isotype

IgG

### Purification

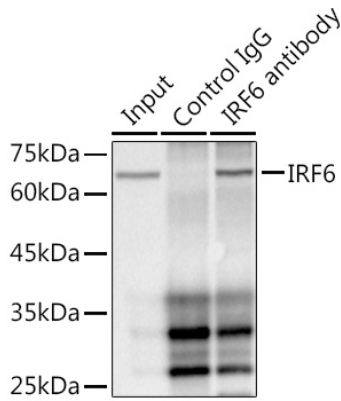
Affinity purification

### Storage

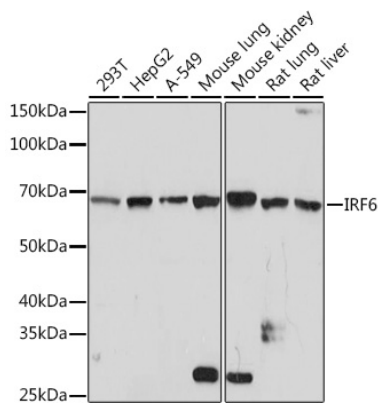
Store at -20°C. Avoid freeze / thaw cycles.

Buffer: PBS containing 50% glycerol and 0.05% BSA, preserved with proclin300 or sodium azide (as specified on the Certificate of Analysis), pH 7.3.

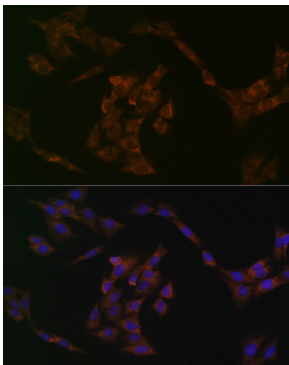
## Validation Data



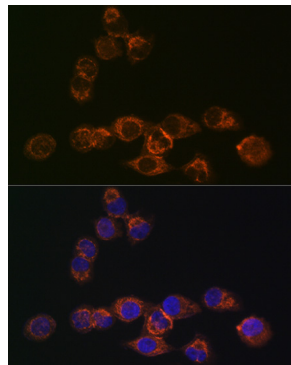
Immunoprecipitation analysis of 300 µg extracts of HepG2 cells using 3 µg IRF6 antibody (A3209). Western blot was performed from the immunoprecipitate using IRF6 antibody (A3209) at a dilution of 1:1000.



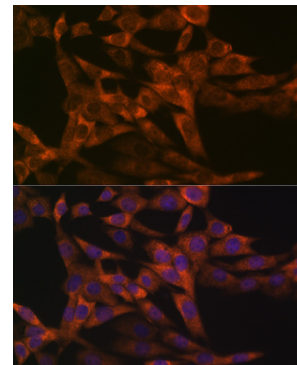
Western blot analysis of various lysates using IRF6 Rabbit mAb (A3209) at 1:1000 dilution. Secondary antibody: HRP-conjugated Goat anti-Rabbit IgG (H+L) (AS014) at 1:10000 dilution. Lysates/proteins: 25µg per lane. Blocking buffer: 3% nonfat dry milk in TBST. Detection: ECL Basic Kit (RM00020). Exposure time: 3min.



Immunofluorescence analysis of C6 cells using IRF6 Rabbit mAb (A3209) at dilution of 1:100 (40x lens). Secondary antibody: Cy3-conjugated Goat anti-Rabbit IgG (H+L) (AS007) at 1:500 dilution. Blue: DAPI for nuclear staining.



Immunofluorescence analysis of HeLa cells using IRF6 Rabbit mAb (A3209) at dilution of 1:100 (40x lens). Secondary antibody: Cy3-conjugated Goat anti-Rabbit IgG (H+L) (AS007) at 1:500 dilution. Blue: DAPI for nuclear staining.



Immunofluorescence analysis of NIH-3T3 cells using IRF6 Rabbit mAb (A3209) at dilution of 1:100 (40x lens). Secondary antibody: Cy3-conjugated Goat anti-Rabbit IgG (H+L) (AS007) at 1:500 dilution. Blue: DAPI for nuclear staining.