

EGR2 Rabbit mAb

Catalog No.: A3219 **Recombinant**

Basic Information

Observed MW

53kDa

Calculated MW

50kDa

Category

Primary antibody

Applications

ELISA, WB, IP

Cross-Reactivity

Human, Mouse, Rat

CloneNo number

ARC1932

Background

The protein encoded by this gene is a transcription factor with three tandem C2H2-type zinc fingers. Defects in this gene are associated with Charcot-Marie-Tooth disease type 1D (CMT1D), Charcot-Marie-Tooth disease type 4E (CMT4E), and with Dejerine-Sottas syndrome (DSS). Multiple transcript variants encoding two different isoforms have been found for this gene.

Recommended Dilutions

WB 1:500 - 1:1000

IP 0.5µg-4µg antibody for
400µg-600µg extracts of
whole cells

Immunogen Information

Gene ID

1959

Swiss Prot

P11161

Immunogen

A synthetic peptide corresponding to a sequence within amino acids 1-100 of human EGR2 (NP_000390.2).

Synonyms

AT591; CMT1D; CMT4E; KROX20; EGR2

Contact

☎ | 400-999-6126

✉ | cn.market@abclonal.com.cn

🌐 | www.abclonal.com.cn

Product Information

Source

Rabbit

Isotype

IgG

Purification

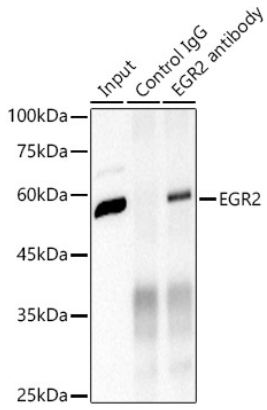
Affinity purification

Storage

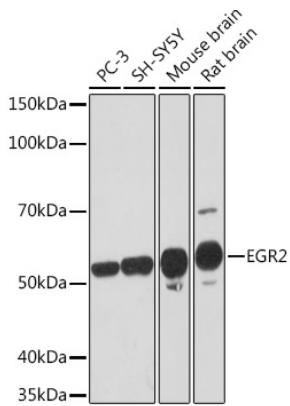
Store at -20°C. Avoid freeze / thaw cycles.

Buffer: PBS with 0.02% sodium azide, 0.05% BSA, 50% glycerol, pH7.3.

Validation Data



Immunoprecipitation analysis of 600 μ g extracts of Mouse brain cells using 3 μ g EGR2 antibody (A3219). Western blot was performed from the immunoprecipitate using EGR2 antibody (A3219) at a dilution of 1:500.



Western blot analysis of various lysates using EGR2 Rabbit mAb (A3219) at 1:1000 dilution. Secondary antibody: HRP Goat Anti-Rabbit IgG (H+L) (AS014) at 1:10000 dilution. Lysates/proteins: 25 μ g per lane. Blocking buffer: 3% nonfat dry milk in TBST. Detection: ECL Basic Kit (RM00020). Exposure time: 3min.