

CAMK2G Rabbit pAb

Catalog No.: A3231 **1 Publications**

Basic Information

Observed MW

75kDa/80kDa

Calculated MW

63kDa

Category

Primary antibody

Applications

ELISA, WB, IHC-P, IF/ICC

Cross-Reactivity

Human, Mouse, Rat

Background

The product of this gene is one of the four subunits of an enzyme which belongs to the serine/threonine protein kinase family, and to the Ca(2+)/calmodulin-dependent protein kinase subfamily. Calcium signaling is crucial for several aspects of plasticity at glutamatergic synapses. In mammalian cells the enzyme is composed of four different chains: alpha, beta, gamma, and delta. The product of this gene is a gamma chain. Many alternatively spliced transcripts encoding different isoforms have been described but the full-length nature of all the variants has not been determined.

Recommended Dilutions

WB	1:500 - 1:2000
IHC-P	1:50 - 1:200
IF/ICC	1:50 - 1:200

Immunogen Information

Gene ID

818

Swiss Prot

Q13555

Immunogen

Recombinant fusion protein containing a sequence corresponding to amino acids 300-410 of human CAMK2G (NP_751909.1).

Synonyms

CAMK; CAMKG; MRD59; CAMK-II; CAMK2G

Contact

☎ | 400-999-6126

✉ | cn.market@abclonal.com.cn

🌐 | www.abclonal.com.cn

Product Information

Source

Rabbit

Isotype

IgG

Purification

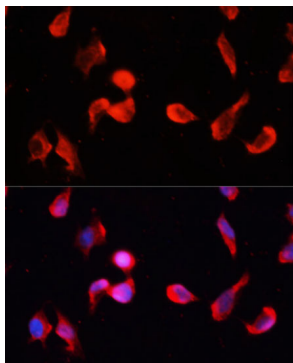
Affinity purification

Storage

Store at -20°C. Avoid freeze / thaw cycles.

Buffer: PBS with 0.02% sodium azide, 50% glycerol, pH7.3.

Validation Data



Immunofluorescence analysis of HeLa cells using CAMK2G Polyclonal Antibody (A3231) at dilution of 1:100 (40x lens). Blue: DAPI for nuclear staining.