

NFIA Rabbit pAb

Catalog No.: A3258

Basic Information

Observed MW

60kDa

Calculated MW

56kDa

Category

Primary antibody

Applications

ELISA, WB, IHC-P, IF/ICC

Cross-Reactivity

Human, Mouse, Rat

Background

This gene encodes a member of the NF1 (nuclear factor 1) family of transcription factors. Multiple transcript variants encoding different isoforms have been found for this gene.

Recommended Dilutions

WB	1:200 - 1:2000
IHC-P	1:50 - 1:200
IF	1:50 - 1:200

Immunogen Information

Gene ID

4774

Swiss Prot

Q12857

Immunogen

Recombinant fusion protein containing a sequence corresponding to amino acids 180-330 of human NFIA (NP_005586.1).

Synonyms

CTF; NF1-A; NFI-A; NFI-L; BRMUTD; NF-I/A; DEL1P32P31; C1DELp32p31; NFIA

Contact

		400-999-6126
		cn.market@abclonal.com.cn
		www.abclonal.com.cn

Product Information

Source

Rabbit

Isotype

IgG

Purification

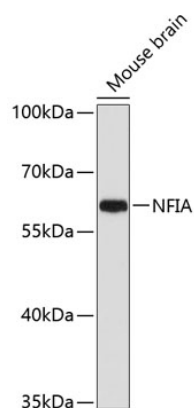
Affinity purification

Storage

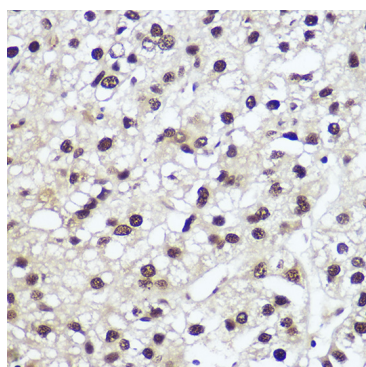
Store at -20°C. Avoid freeze / thaw cycles.

Buffer: PBS with 0.02% sodium azide, 50% glycerol, pH 7.3.

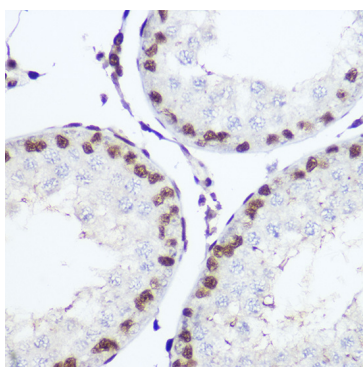
Validation Data



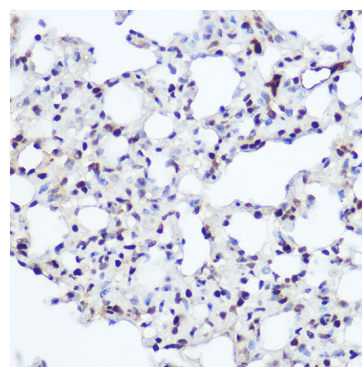
Western blot analysis of extracts of mouse brain, using NFIA antibody (A3258) at 1:1000 dilution.
Secondary antibody: HRP Goat Anti-Rabbit IgG (H+L) (AS014) at 1:10000 dilution.
Lysates/proteins: 25µg per lane.
Blocking buffer: 3% nonfat dry milk in TBST.
Detection: ECL Basic Kit (RM00020).
Exposure time: 60s.



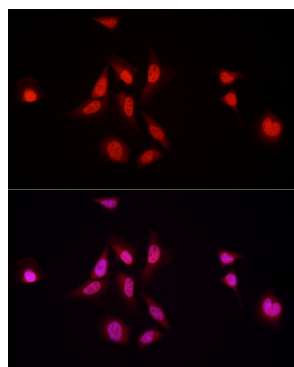
Immunohistochemistry analysis of paraffin-embedded human liver cancer using NFIA Rabbit pAb (A3258) at dilution of 1:200 (40x lens). Perform high pressure antigen retrieval with 10 mM citrate buffer pH 6.0 before commencing with IHC staining protocol.



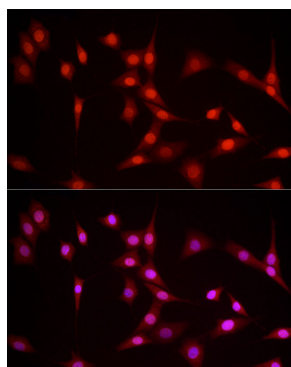
Immunohistochemistry analysis of paraffin-embedded mouse testis using NFIA Rabbit pAb (A3258) at dilution of 1:200 (40x lens). Perform high pressure antigen retrieval with 10 mM citrate buffer pH 6.0 before commencing with IHC staining protocol.



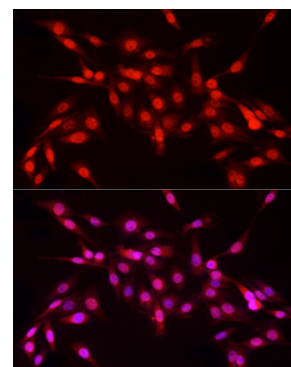
Immunohistochemistry analysis of paraffin-embedded rat lung using NFIA Rabbit pAb (A3258) at dilution of 1:200 (40x lens). Perform high pressure antigen retrieval with 10 mM citrate buffer pH 6.0 before commencing with IHC staining protocol.



Immunofluorescence analysis of HeLa cells using NFIA Rabbit pAb (A3258) at dilution of 1:100 (40x lens). Blue: DAPI for nuclear staining.



Immunofluorescence analysis of NIH/3T3 cells using NFIA Rabbit pAb (A3258) at dilution of 1:100 (40x lens). Blue: DAPI for nuclear staining.



Immunofluorescence analysis of PC-12 cells using NFIA Rabbit pAb (A3258) at dilution of 1:100 (40x lens). Blue: DAPI for nuclear staining.