

HE4/WFDC2 Rabbit mAb

Catalog No.: A3276 **Recombinant** **1 Publications**

Basic Information

Observed MW

22kDa

Calculated MW

13kDa

Category

Primary antibody

Applications

ELISA, WB, IF/ICC

Cross-Reactivity

Human, Mouse

CloneNo number

ARC1936

Background

This gene encodes a protein that is a member of the WFDC domain family. The WFDC domain, or WAP Signature motif, contains eight cysteines forming four disulfide bonds at the core of the protein, and functions as a protease inhibitor in many family members. This gene is expressed in pulmonary epithelial cells, and was also found to be expressed in some ovarian cancers. The encoded protein is a small secretory protein, which may be involved in sperm maturation.

Recommended Dilutions

WB	1:500 - 1:2000
IF/ICC	1:50 - 1:200

Immunogen Information

Gene ID

10406

Swiss Prot

Q14508

Immunogen

A synthetic peptide corresponding to a sequence within amino acids 45-124 of human HE4/WFDC2 (Q14508).

Synonyms

HE4; WAP5; EDDM4; dj461P17.6; HE4/WFDC2

Contact

 | 400-999-6126

 | cn.market@abclonal.com.cn

 | www.abclonal.com.cn

Product Information

Source

Rabbit

Isotype

IgG

Purification

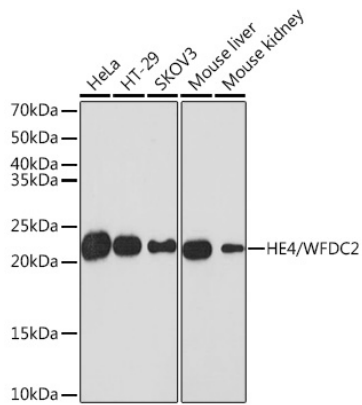
Affinity purification

Storage

Store at -20°C. Avoid freeze / thaw cycles.

Buffer: PBS with 0.02% sodium azide, 0.05% BSA, 50% glycerol, pH7.3.

Validation Data



Western blot analysis of extracts of various cell lines, using HE4/WFDC2 Rabbit mAb (A3276) at 1:1000 dilution.

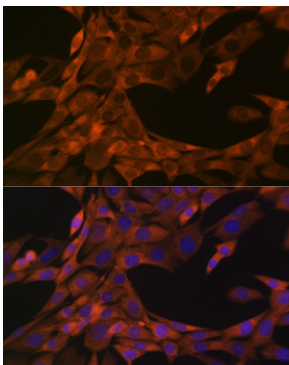
Secondary antibody: HRP Goat Anti-Rabbit IgG (H+L) (AS014) at 1:10000 dilution.

Lysates/proteins: 25µg per lane.

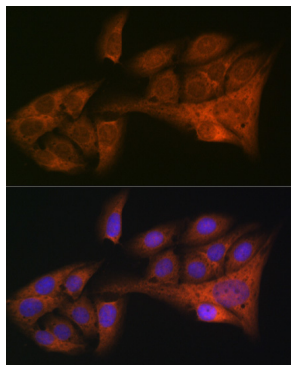
Blocking buffer: 3% nonfat dry milk in TBST.

Detection: ECL Basic Kit (RM00020).

Exposure time: 3min.



Immunofluorescence analysis of NIH-3T3 cells using HE4/WFDC2 Rabbit mAb (A3276) at dilution of 1:100 (40x lens). Blue: DAPI for nuclear staining.



Immunofluorescence analysis of U-2 OS cells using HE4/WFDC2 Rabbit mAb (A3276) at dilution of 1:100 (40x lens). Blue: DAPI for nuclear staining.