

KIF5A Rabbit pAb

Catalog No.: A3303 **1 Publications**

Basic Information

Observed MW

129kDa

Calculated MW

117kDa

Category

Primary antibody

Applications

ELISA, WB, IF/ICC

Cross-Reactivity

Human, Mouse, Rat

Background

This gene encodes a member of the kinesin family of proteins. Members of this family are part of a multisubunit complex that functions as a microtubule motor in intracellular organelle transport. Mutations in this gene cause autosomal dominant spastic paraplegia 10.

Recommended Dilutions

WB	1:1000 - 1:3000
IF/ICC	1:50 - 1:200

Immunogen Information

Gene ID

3798

Swiss Prot

Q12840

Immunogen

Recombinant fusion protein containing a sequence corresponding to amino acids 933-1032 of human KIF5A (NP_004975.2).

Synonyms

NKHC; ALS25; MY050; NEIMY; SPG10; D12S1889; KIF5A

Contact

 | 400-999-6126

 | cn.market@abclonal.com.cn

 | www.abclonal.com.cn

Product Information

Source

Rabbit

Isotype

IgG

Purification

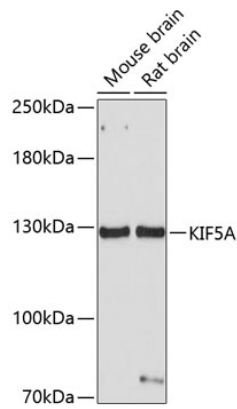
Affinity purification

Storage

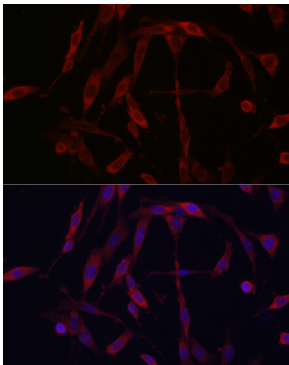
Store at -20°C. Avoid freeze / thaw cycles.

Buffer: PBS with 0.01% thimerosal, 50% glycerol, pH7.3.

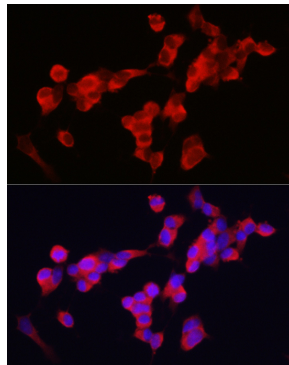
Validation Data



Western blot analysis of various lysates using KIF5A Rabbit pAb (A3303) at 1:1000 dilution.
Secondary antibody: HRP Goat Anti-Rabbit IgG (H+L) (AS014) at 1:10000 dilution.
Lysates/proteins: 25µg per lane.
Blocking buffer: 3% nonfat dry milk in TBST.
Detection: ECL Basic Kit (RM00020).
Exposure time: 30s.



Immunofluorescence analysis of PC-12 cells using KIF5A Rabbit pAb (A3303) at dilution of 1:200 (40x lens). Secondary antibody: Cy3 Goat Anti-Rabbit IgG (H+L) (AS007) at 1:500 dilution. Blue: DAPI for nuclear staining.



Immunofluorescence analysis of SH-SY5Y cells using KIF5A Rabbit pAb (A3303) at dilution of 1:200 (40x lens). Secondary antibody: Cy3 Goat Anti-Rabbit IgG (H+L) (AS007) at 1:500 dilution. Blue: DAPI for nuclear staining.