

SLC39A7 Rabbit pAb

Catalog No.: A3343

Basic Information

Observed MW

50kDa

Calculated MW

50kDa

Category

Primary antibody

Applications

ELISA, WB

Cross-Reactivity

Human, Mouse, Rat

Background

The protein encoded by this gene transports zinc from the Golgi and endoplasmic reticulum to the cytoplasm. This transport may be important for activation of tyrosine kinases, some of which could be involved in cancer progression. Therefore, modulation of the encoded protein could be useful as a therapeutic agent against cancer. Alternative splicing results in multiple transcript variants.

Recommended Dilutions

WB 1:1000 - 1:3000

Immunogen Information

Gene ID

7922

Swiss Prot

Q92504

Immunogen

Recombinant fusion protein containing a sequence corresponding to amino acids 235-380 of human SLC39A7 (NP_008910.2).

Synonyms

KE4; AGM9; HKE4; ZIP7; RING5; H2-KE4; D6S115E; D6S2244E; SLC39A7

Contact

☎ | 400-999-6126

✉ | cn.market@abclonal.com.cn

🌐 | www.abclonal.com.cn

Product Information

Source

Rabbit

Isotype

IgG

Purification

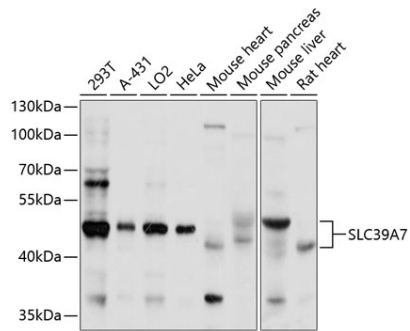
Affinity purification

Storage

Store at -20°C. Avoid freeze / thaw cycles.

Buffer: PBS with 0.02% sodium azide, 50% glycerol, pH7.3.

Validation Data



Western blot analysis of extracts of various cell lines, using SLC39A7 antibody (A3343) at 1:1000 dilution.
Secondary antibody: HRP Goat Anti-Rabbit IgG (H+L) (AS014) at 1:10000 dilution.
Lysates/proteins: 25µg per lane.
Blocking buffer: 3% nonfat dry milk in TBST.
Detection: ECL Basic Kit (RM00020).
Exposure time: 20s.