

# IL1RAPL1 Rabbit pAb

Catalog No.: A3378

## Basic Information

### Observed MW

90kDa

### Calculated MW

80kDa

### Category

Primary antibody

### Applications

ELISA, WB

### Cross-Reactivity

Human, Mouse, Rat

## Background

The protein encoded by this gene is a member of the interleukin 1 receptor family and is similar to the interleukin 1 accessory proteins. This protein has an N-terminal signal peptide, three extracellular immunoglobulin Ig-like domains, a transmembrane domain, an intracellular Toll/IL-1R domain, and a long C-terminal tail which interacts with multiple signalling molecules. This gene is located at a region on chromosome X that is associated with a non-syndromic form of X-linked intellectual disability. Deletions and mutations in this gene were found in patients with intellectual disability. This gene is expressed at a high level in post-natal brain structures involved in the hippocampal memory system, which suggests a specialized role in the physiological processes underlying memory and learning abilities, and plays a role in synapse formation and stabilization.

## Recommended Dilutions

WB 1:500 - 1:2000

## Immunogen Information

### Gene ID

11141

### Swiss Prot

Q9NZN1

### Immunogen

Recombinant fusion protein containing a sequence corresponding to amino acids 130-210 of human IL1RAPL1 (NP\_055086.1).

### Synonyms

IL1R8; MRX10; MRX21; MRX34; OPHN4; IL1RAPL; TIGIRR-2; IL1RAPL-1; IL-1RAPL-1; IL-1-RAPL-1; IL1RAPL1

## Contact

☎ | 400-999-6126

✉ | [cn.market@abclonal.com.cn](mailto:cn.market@abclonal.com.cn)

🌐 | [www.abclonal.com.cn](http://www.abclonal.com.cn)

## Product Information

### Source

Rabbit

### Isotype

IgG

### Purification

Affinity purification

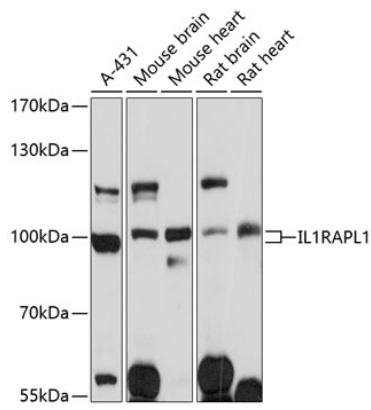
### Storage

Store at -20°C. Avoid freeze / thaw cycles.

Buffer: PBS with 0.01% thimerosal, 50% glycerol, pH7.3.

## Validation Data

---



Western blot analysis of various lysates using IL1RAPL1 Rabbit pAb (A3378) at 1:3000 dilution.  
Secondary antibody: HRP Goat Anti-Rabbit IgG (H+L) (AS014) at 1:10000 dilution.  
Lysates/proteins: 25µg per lane.  
Blocking buffer: 3% nonfat dry milk in TBST.  
Detection: ECL Basic Kit (RM00020).  
Exposure time: 30s.