

SAMM50 Rabbit pAb

Catalog No.: A3401 **1 Publications**

Basic Information

Observed MW

55kDa

Calculated MW

52kDa

Category

Primary antibody

Applications

WB, IHC-P, IP, ELISA

Cross-Reactivity

Human, Mouse, Rat

Background

This gene encodes a component of the Sorting and Assembly Machinery (SAM) of the mitochondrial outer membrane. The Sam complex functions in the assembly of beta-barrel proteins into the outer mitochondrial membrane.

Recommended Dilutions

WB 1:500 - 1:2000

IHC-P 1:50 - 1:200

IP 0.5µg-4µg antibody for
400µg-600µg extracts of
whole cells

ELISA Recommended starting
concentration is 1 µg/mL.
Please optimize the
concentration based on
your specific assay
requirements.

Immunogen Information

Gene ID

25813

Swiss Prot

Q9Y512

Immunogen

Recombinant protein (or fragment). This information is considered to be commercially sensitive.

Synonyms

OMP85; SAM50; TOB55; TRG-3; CGI-51; YNL026W; SAMM50

Contact

 | 400-999-6126

 | cn.market@abclonal.com.cn

 | www.abclonal.com.cn

Product Information

Source

Rabbit

Isotype

IgG

Purification

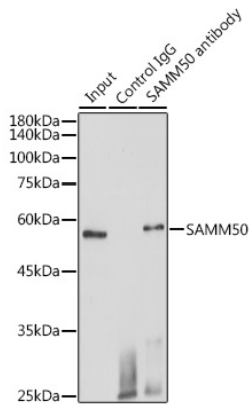
Affinity purification

Storage

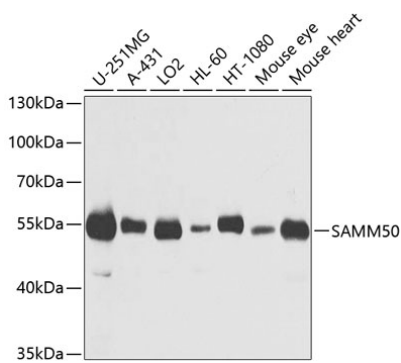
Store at -20°C. Avoid freeze / thaw cycles.

Buffer: PBS containing 50% glycerol, preserved with proclin300 or sodium azide (as specified on the Certificate of Analysis), pH 7.3.

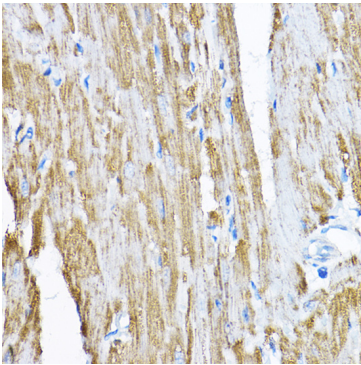
Validation Data



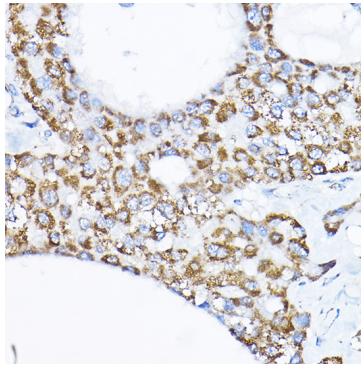
Immunoprecipitation analysis of 600 μ g extracts of Mouse heart cells using 3 μ g SAMM50 antibody (A3401). Western blot was performed from the immunoprecipitate using SAMM50 antibody (A3401) at a dilution of 1:1000.



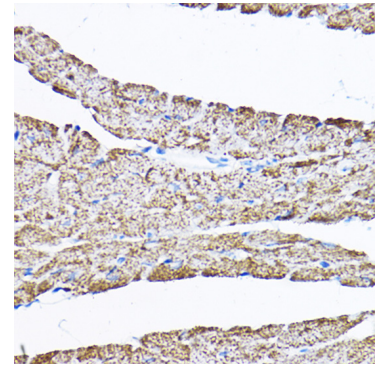
Western blot analysis of various lysates using SAMM50 Rabbit pAb (A3401) at 1:1000 dilution. Secondary antibody: HRP-conjugated Goat anti-Rabbit IgG (H+L) (AS014) at 1:10000 dilution. Lysates/proteins: 25 μ g per lane. Blocking buffer: 3% nonfat dry milk in TBST. Detection: ECL Basic Kit (RM00020). Exposure time: 30s.



Immunohistochemistry analysis of paraffin-embedded Rat heart using SAMM50 Rabbit pAb (A3401) at dilution of 1:200 (40x lens). High pressure antigen retrieval performed with 0.01M Citrate buffer (pH 6.0) prior to IHC staining.



Immunohistochemistry analysis of paraffin-embedded Human liver cancer using SAMM50 Rabbit pAb (A3401) at dilution of 1:200 (40x lens). High pressure antigen retrieval performed with 0.01M Citrate buffer (pH 6.0) prior to IHC staining.



Immunohistochemistry analysis of paraffin-embedded Mouse heart using SAMM50 Rabbit pAb (A3401) at dilution of 1:200 (40x lens). High pressure antigen retrieval performed with 0.01M Citrate buffer (pH 6.0) prior to IHC staining.