

# Phospholipid Scramblase 1 (PLSCR1) Rabbit mAb

Catalog No.: A3430 **Recombinant**

## Basic Information

**Observed MW**

35kDa

**Calculated MW**

35kDa

**Category**

Primary antibody

**Applications**

ELISA, WB, IHC-P, IF/ICC

**Cross-Reactivity**

Human, Mouse, Rat

**CloneNo number**

ARC2028

## Background

This gene encodes a phospholipid scramblase family member. The encoded protein is involved in disruption of the asymmetrical distribution of phospholipids between the inner and outer leaflets of the plasma membrane, resulting in externalization of phosphatidylserine. This cell membrane disruption plays an important role in the blood coagulation cascade as well as macrophage clearing of apoptotic cells. The encoded protein has additionally been implicated in gene regulation and interferon-induced antiviral responses.

## Recommended Dilutions

<b>WB</b>	1:500 - 1:1000
<b>IHC-P</b>	1:50 - 1:200
<b>IF/ICC</b>	1:50 - 1:200

## Immunogen Information

**Gene ID**

5359

**Swiss Prot**

O15162

**Immunogen**

A synthetic peptide corresponding to a sequence within amino acids 1-100 of human Phospholipid Scramblase 1 (PLSCR1) (NP\_066928.1).

**Synonyms**

MMTRA1B; Phospholipid Scramblase 1 (PLSCR1)

## Contact

 | 400-999-6126 | [cn.market@abclonal.com.cn](mailto:cn.market@abclonal.com.cn) | [www.abclonal.com.cn](http://www.abclonal.com.cn)

## Product Information

**Source**

Rabbit

**Isotype**

IgG

**Purification**

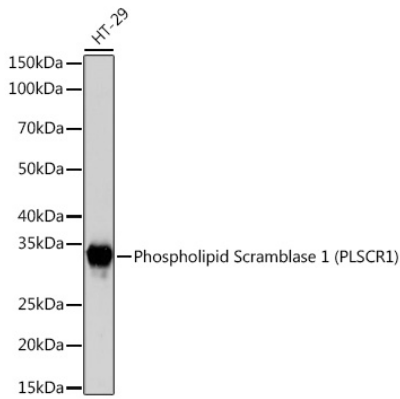
Affinity purification

**Storage**

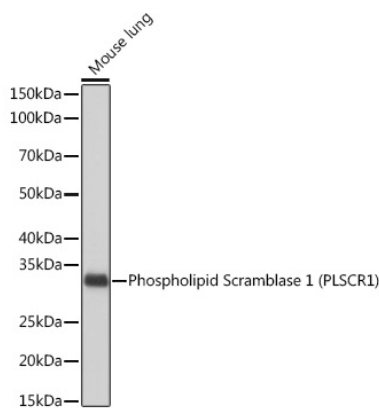
Store at -20°C. Avoid freeze / thaw cycles.

Buffer: PBS with 0.02% sodium azide, 0.05% BSA, 50% glycerol, pH7.3.

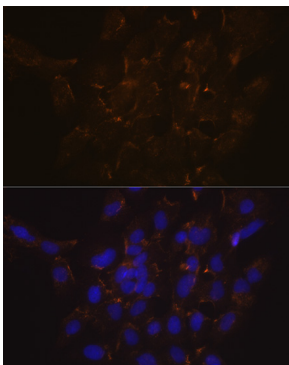
## Validation Data



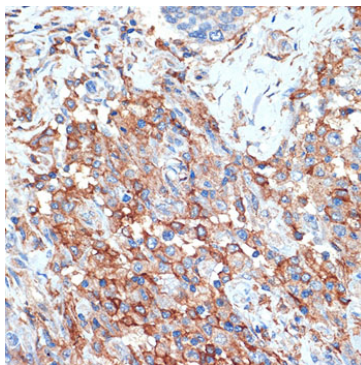
Western blot analysis of lysates from HT-29 cells, using Phospholipid Phospholipid Scramblase 1 (PLSCR1) (PLSCR1) Rabbit mAb (A3430) at 1:1000 dilution.  
Secondary antibody: HRP Goat Anti-Rabbit IgG (H+L) (AS014) at 1:10000 dilution.  
Lysates/proteins: 25µg per lane.  
Blocking buffer: 3% nonfat dry milk in TBST.  
Detection: ECL Basic Kit (RM00020).  
Exposure time: 3s.



Western blot analysis of lysates from Mouse lung, using Phospholipid Phospholipid Scramblase 1 (PLSCR1) (PLSCR1) Rabbit mAb (A3430) at 1:1000 dilution.  
Secondary antibody: HRP Goat Anti-Rabbit IgG (H+L) (AS014) at 1:10000 dilution.  
Lysates/proteins: 25µg per lane.  
Blocking buffer: 3% nonfat dry milk in TBST.  
Detection: ECL Basic Kit (RM00020).  
Exposure time: 10s.



Immunofluorescence analysis of C6 cells using Phospholipid Phospholipid Scramblase 1 (PLSCR1) (PLSCR1) Rabbit mAb (A3430) at dilution of 1:100 (40x lens). Secondary antibody: Cy3 Goat Anti-Rabbit IgG (H+L) (AS007) at 1:500 dilution. Blue: DAPI for nuclear staining.



Immunohistochemistry analysis of paraffin-embedded human breast cancer using Phospholipid Phospholipid Scramblase 1 (PLSCR1) (PLSCR1) Rabbit mAb (A3430) at dilution of 1:100 (40x lens). Perform microwave antigen retrieval with 10 mM Tris/EDTA buffer pH 9.0 before commencing with IHC staining protocol.