

C14orf166 Rabbit pAb

Catalog No.: A3436

Basic Information

Observed MW

25kDa/28kDa

Calculated MW

28kDa

Category

Primary antibody

Applications

WB, ELISA

Cross-Reactivity

Human, Mouse

Background

Enables RNA binding activity; RNA polymerase II complex binding activity; and identical protein binding activity. Involved in negative regulation of protein kinase activity; positive regulation of transcription by RNA polymerase II; and tRNA splicing, via endonucleolytic cleavage and ligation. Located in microtubule cytoskeleton; nucleoplasm; and perinuclear region of cytoplasm. Part of tRNA-splicing ligase complex.

Recommended Dilutions

WB 1:500 - 1:2000

ELISA Recommended starting concentration is 1 µg/mL. Please optimize the concentration based on your specific assay requirements.

Immunogen Information

Gene ID

51637

Swiss Prot

Q9Y224

Immunogen

Recombinant protein (or fragment). This information is considered to be commercially sensitive.

Synonyms

CLE; CLE7; hCLE; CGI99; RLLM1; hCLE1; CGI-99; LCRP369; C14orf166

Contact

 | 400-999-6126

 | cn.market@abclonal.com.cn

 | www.abclonal.com.cn

Product Information

Source

Rabbit

Isotype

IgG

Purification

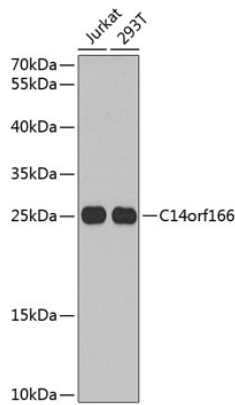
Affinity purification

Storage

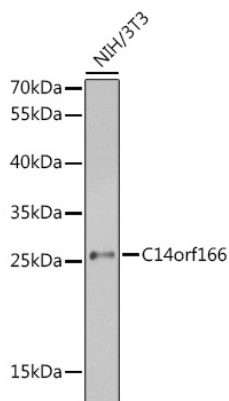
Store at -20°C. Avoid freeze / thaw cycles.

Buffer: PBS containing 50% glycerol, preserved with proclin300 or sodium azide (as specified on the Certificate of Analysis), pH 7.3.

Validation Data



Western blot analysis of various lysates using C14orf166 Rabbit pAb (A3436) at 1:1000 dilution.
Secondary antibody: HRP-conjugated Goat anti-Rabbit IgG (H+L) (AS014) at 1:10000 dilution.
Lysates/proteins: 25µg per lane.
Blocking buffer: 3% nonfat dry milk in TBST.
Detection: ECL Basic Kit (RM00020).
Exposure time: 90s.



Western blot analysis of lysates from NIH/3T3 cells, using C14orf166 Rabbit pAb (A3436) at 1:1000 dilution.
Secondary antibody: HRP-conjugated Goat anti-Rabbit IgG (H+L) (AS014) at 1:10000 dilution.
Lysates/proteins: 25µg per lane.
Blocking buffer: 3% nonfat dry milk in TBST.
Detection: ECL Enhanced Kit (RM00021).
Exposure time: 45s.