

PON1 Rabbit mAb

Catalog No.: A3441

Recombinant

1 Publications

Basic Information

Observed MW

40kDa

Calculated MW

40kDa

Category

Primary antibody

Applications

ELISA, WB, IHC-P, IF/ICC

Cross-Reactivity

Human, Mouse, Rat

CloneNo number

ARC2001

Background

This gene encodes a member of the paraoxonase family of enzymes and exhibits lactonase and ester hydrolase activity. Following synthesis in the kidney and liver, the enzyme is secreted into the circulation, where it binds to high density lipoprotein (HDL) particles and hydrolyzes thiolactones and xenobiotics, including paraoxon, a metabolite of the insecticide parathion. Polymorphisms in this gene may be associated with coronary artery disease and diabetic retinopathy. The gene is found in a cluster of three related paraoxonase genes on chromosome 7.

Recommended Dilutions

WB	1:500 - 1:2000
IHC-P	1:50 - 1:200
IF/ICC	1:50 - 1:200

Immunogen Information

Gene ID

5444

Swiss Prot

P27169

Immunogen

A synthetic peptide corresponding to a sequence within amino acids 50-150 of human PON1 (P27169).

Synonyms

ESA; PON; MVCD5; PON1

Contact

☎ | 400-999-6126

✉ | cn.market@abclonal.com.cn

🌐 | www.abclonal.com.cn

Product Information

Source

Rabbit

Isotype

IgG

Purification

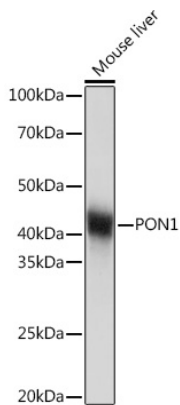
Affinity purification

Storage

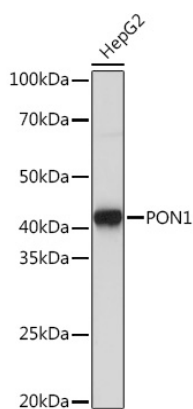
Store at -20°C. Avoid freeze / thaw cycles.

Buffer: PBS with 0.02% sodium azide, 0.05% BSA, 50% glycerol, pH7.3.

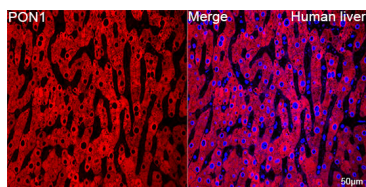
Validation Data



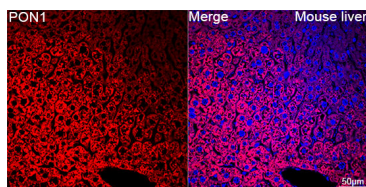
Western blot analysis of lysates from Mouse liver, using PON1 Rabbit mAb (A3441) at 1:1000 dilution. Secondary antibody: HRP Goat Anti-Rabbit IgG (H+L) (AS014) at 1:10000 dilution. Lysates/proteins: 25µg per lane. Blocking buffer: 3% nonfat dry milk in TBST. Detection: ECL Basic Kit (RM00020). Exposure time: 1s.



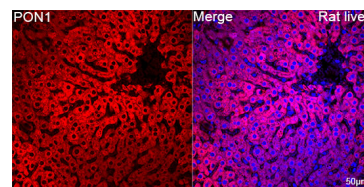
Western blot analysis of lysates from HepG2 cells, using PON1 Rabbit mAb (A3441) at 1:1000 dilution. Secondary antibody: HRP Goat Anti-Rabbit IgG (H+L) (AS014) at 1:10000 dilution. Lysates/proteins: 25µg per lane. Blocking buffer: 3% nonfat dry milk in TBST. Detection: ECL Basic Kit (RM00020). Exposure time: 3s.



Confocal imaging of paraffin-embedded Human liver tissue using PON1 Rabbit mAb (A3441, dilution 1:200) followed by a further incubation with Cy3 Goat Anti-Rabbit IgG (H+L) (AS007, dilution 1:500) (Red). DAPI was used for nuclear staining (Blue). Objective: 40x. Perform high pressure antigen retrieval with 0.01 M citrate buffer (pH 6.0) prior to IF staining.

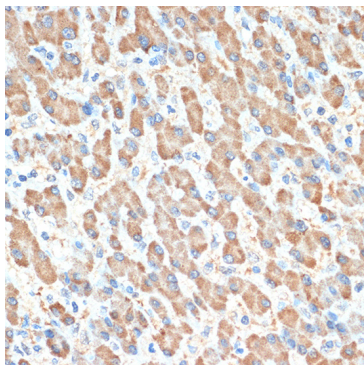


Confocal imaging of paraffin-embedded Mouse liver tissue using PON1 Rabbit mAb (A3441, dilution 1:200) followed by a further incubation with Cy3 Goat Anti-Rabbit IgG (H+L) (AS007, dilution 1:500) (Red). DAPI was used for nuclear staining (Blue). Objective: 40x. Perform high pressure antigen retrieval with 0.01 M citrate buffer (pH 6.0) prior to IF staining.



Confocal imaging of paraffin-embedded Rat liver tissue using PON1 Rabbit mAb (A3441, dilution 1:200) followed by a further incubation with Cy3 Goat Anti-Rabbit IgG (H+L) (AS007, dilution 1:500) (Red). DAPI was used for nuclear staining (Blue). Objective: 40x. Perform high pressure antigen retrieval with 0.01 M citrate buffer (pH 6.0) prior to IF staining.

Validation Data



Immunohistochemistry analysis of paraffin-embedded human liver using PON1 Rabbit mAb (A3441) at dilution of 1:100 (40x lens). Perform microwave antigen retrieval with 10 mM Tris/EDTA buffer pH 9.0 before commencing with IHC staining protocol.