

CREBZF Rabbit pAb

Catalog No.: A3477

Basic Information

Observed MW

60kDa

Calculated MW

37kDa

Category

Primary antibody

Applications

WB,ELISA

Cross-Reactivity

Human, Mouse, Rat

Background

Enables identical protein binding activity. Involved in negative regulation of gene expression, epigenetic; regulation of transcription, DNA-templated; and response to virus. Located in mitochondrion and nucleoplasm.

Recommended Dilutions

WB 1:500 - 1:2000

ELISA Recommended starting concentration is 1 µg/mL. Please optimize the concentration based on your specific assay requirements.

Immunogen Information

Gene ID

58487

Swiss Prot

Q9NS37

Immunogen

Recombinant protein (or fragment). This information is considered to be commercially sensitive.

Synonyms

ZF; SMILE; CREBZF

Contact

 | 400-999-6126

 | cn.market@abclonal.com.cn

 | www.abclonal.com.cn

Product Information

Source

Rabbit

Isotype

IgG

Purification

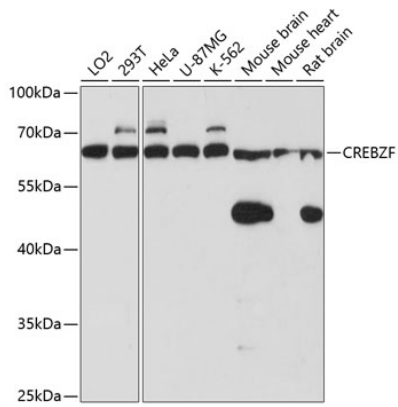
Affinity purification

Storage

Store at -20°C. Avoid freeze / thaw cycles.

Buffer: PBS with 0.01% thimerosal, 50% glycerol, pH7.3.

Validation Data



Western blot analysis of various lysates using CREBZF Rabbit pAb (A3477) at 1:3000 dilution.
Secondary antibody: HRP-conjugated Goat anti-Rabbit IgG (H+L) (AS014) at 1:10000 dilution.
Lysates/proteins: 25 μ g per lane.
Blocking buffer: 3% nonfat dry milk in TBST.
Detection: ECL Enhanced Kit (RM00021).
Exposure time: 1s.