

# SYNPO2L Rabbit pAb

Catalog No.: A3507

## Basic Information

### Observed MW

71kDa

### Calculated MW

102kDa

### Category

Primary antibody

### Applications

WB,ELISA

### Cross-Reactivity

Mouse

## Background

Predicted to enable actin binding activity. Predicted to be involved in several processes, including positive regulation of Rho protein signal transduction; positive regulation of stress fiber assembly; and sarcomere organization. Located in cell junction; cytosol; and nuclear speck.

## Recommended Dilutions

**WB** 1:500 - 1:2000

**ELISA** Recommended starting concentration is 1 µg/mL. Please optimize the concentration based on your specific assay requirements.

## Immunogen Information

### Gene ID

79933

### Swiss Prot

Q9H987

### Immunogen

Synthetic peptide. This information is considered to be commercially sensitive.

### Synonyms

SYNPO2L

## Contact

☎ | 400-999-6126

✉ | [cn.market@abclonal.com.cn](mailto:cn.market@abclonal.com.cn)

🌐 | [www.abclonal.com.cn](http://www.abclonal.com.cn)

## Product Information

### Source

Rabbit

### Isotype

IgG

### Purification

Affinity purification

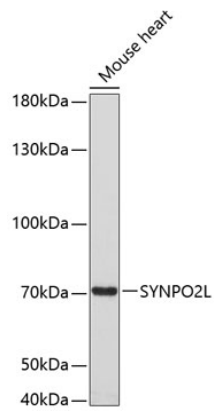
### Storage

Store at -20°C. Avoid freeze / thaw cycles.

Buffer: PBS with 0.01% thimerosal, 50% glycerol, pH7.3.

## Validation Data

---



Western blot analysis of lysates from mouse heart, using SYNPO2L Rabbit pAb (A3507) at 1:3000 dilution. Secondary antibody: HRP-conjugated Goat anti-Rabbit IgG (H+L) (AS014) at 1:10000 dilution. Lysates/proteins: 25µg per lane. Blocking buffer: 3% nonfat dry milk in TBST. Detection: ECL Enhanced Kit (RM00021). Exposure time: 90s.