

# TLE1 Rabbit mAb

Catalog No.: A3528

Recombinant

1 Publications

## Basic Information

### Observed MW

83 kDa

### Calculated MW

83 kDa

### Category

Primary antibody

### Applications

WB, IHC-P, ELISA

### Cross-Reactivity

Human, Mouse, Rat

### CloneNo number

ARC0793

## Background

Enables identical protein binding activity and transcription corepressor activity. Involved in negative regulation of I-kappaB kinase/NF-kappaB signaling; negative regulation of anoikis; and regulation of gene expression. Located in cytosol and nucleoplasm. Part of beta-catenin-TCF complex.

## Recommended Dilutions

**WB** 1:500 - 1:2000

**IHC-P** 1:50 - 1:200

**ELISA** Recommended starting concentration is 1 µg/mL. Please optimize the concentration based on your specific assay requirements.

## Immunogen Information

### Gene ID

7088

### Swiss Prot

Q04724

### Immunogen

Synthetic peptide. This information is considered to be commercially sensitive.

### Synonyms

ESG; ESG1; GRG1; TLE-1; TLE1

## Contact

☎ | 400-999-6126

✉ | [cn.market@abclonal.com.cn](mailto:cn.market@abclonal.com.cn)

🌐 | [www.abclonal.com.cn](http://www.abclonal.com.cn)

## Product Information

### Source

Rabbit

### Isotype

IgG

### Purification

Affinity purification

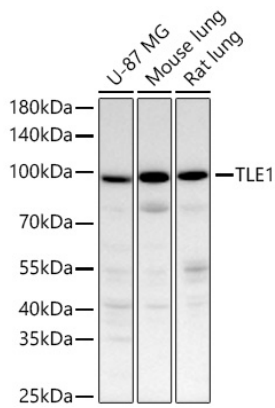
### Storage

Store at -20°C. Avoid freeze / thaw cycles.

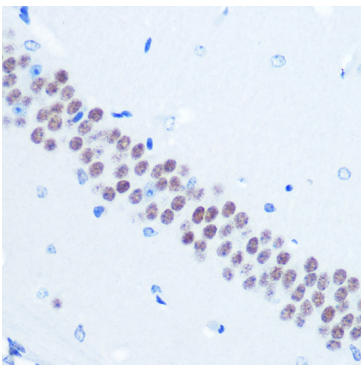
Buffer: PBS containing 50% glycerol and 0.05% BSA, preserved with proclin300 or sodium azide (as specified on the Certificate of Analysis), pH 7.3.

## Validation Data

---



Western blot analysis of various lysates using TLE1 Rabbit mAb (A3528) at 1:1000 dilution incubated at room temperature for 1.5 hours.  
Secondary antibody: HRP-conjugated Goat anti-Rabbit IgG (H+L) (AS014) at 1:10000 dilution.  
Lysates/proteins: 25 µg per lane.  
Blocking buffer: 3% nonfat dry milk in TBST.  
Detection: ECL Basic Kit (RM00020).  
Exposure time: 90 s.



Immunohistochemistry analysis of paraffin-embedded Mouse brain using TLE1 Rabbit mAb (A3528) at dilution of 1:100 (40x lens). Microwave antigen retrieval performed with 0.01M PBS Buffer (pH 7.2) prior to IHC staining.