

MELK Rabbit mAb

Catalog No.: A3530 **Recombinant** **3 Publications**

Basic Information

Observed MW

75kDa

Calculated MW

75kDa

Category

Primary antibody

Applications

ELISA, WB

Cross-Reactivity

Human, Mouse, Rat

CloneNo number

ARC2032

Background

Enables calcium ion binding activity; non-membrane spanning protein tyrosine kinase activity; and protein serine/threonine kinase activity. Involved in apoptotic process; cell population proliferation; and protein autophosphorylation. Located in cell cortex and plasma membrane.

Recommended Dilutions

WB 1:500 - 1:2000

Immunogen Information

Gene ID

9833

Swiss Prot

Q14680

Immunogen

A synthetic peptide corresponding to a sequence within amino acids 1-100 of human MELK (NP_055606.1).

Synonyms

HPK38; MELK

Contact

☎ | 400-999-6126

✉ | cn.market@abclonal.com.cn

🌐 | www.abclonal.com.cn

Product Information

Source

Rabbit

Isotype

IgG

Purification

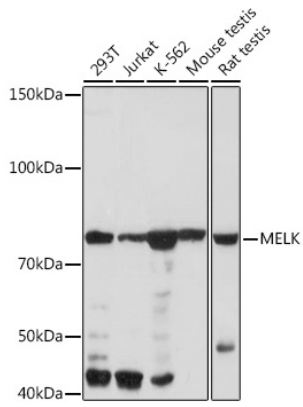
Affinity purification

Storage

Store at -20°C. Avoid freeze / thaw cycles.

Buffer: PBS with 0.02% sodium azide, 0.05% BSA, 50% glycerol, pH7.3.

Validation Data



Western blot analysis of extracts of various cell lines, using MELK Rabbit mAb (A3530) at 1:1000 dilution.
Secondary antibody: HRP Goat Anti-Rabbit IgG (H+L) (AS014) at 1:10000 dilution.
Lysates/proteins: 25µg per lane.
Blocking buffer: 3% nonfat dry milk in TBST.
Detection: ECL Basic Kit (RM00020).
Exposure time: 1min.