

SMC4 Rabbit mAb

Catalog No.: A3559 **Recombinant**

Basic Information

Observed MW

180kDa

Calculated MW

147kDa

Category

Primary antibody

Applications

ELISA, WB, IF/ICC

Cross-Reactivity

Human, Mouse, Rat

CloneNo number

ARC2042

Background

This gene belongs to the 'structural maintenance of chromosomes' (SMC) gene family. Members of this gene family play a role in two changes in chromosome structure during mitotic segregation of chromosomes- chromosome condensation and sister chromatid cohesion. The protein encoded by this gene is likely a subunit of the 13S condensin complex, which is involved in chromosome condensation. A pseudogene related to this gene is located on chromosome 2.

Recommended Dilutions

WB 1:500 - 1:2000

IF/ICC 1:50 - 1:200

Immunogen Information

Gene ID

10051

Swiss Prot

Q9NTJ3

Immunogen

A synthetic peptide corresponding to a sequence within amino acids 1189-1288 of human SMC4 (Q9NTJ3).

Synonyms

CAPC; CAP-C; SMC-4; SMC4L1; SMC4

Contact

☎ | 400-999-6126

✉ | cn.market@abclonal.com.cn

🌐 | www.abclonal.com.cn

Product Information

Source

Rabbit

Isotype

IgG

Purification

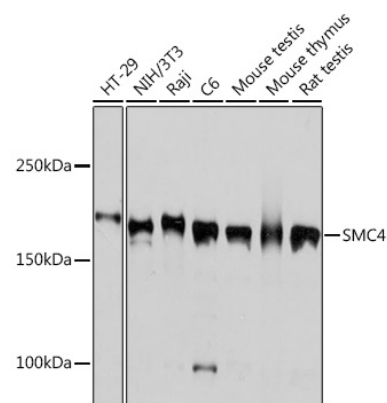
Affinity purification

Storage

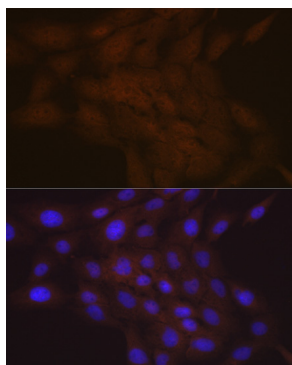
Store at -20°C. Avoid freeze / thaw cycles.

Buffer: PBS with 0.02% sodium azide, 0.05% BSA, 50% glycerol, pH7.3.

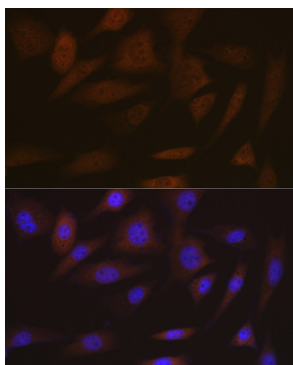
Validation Data



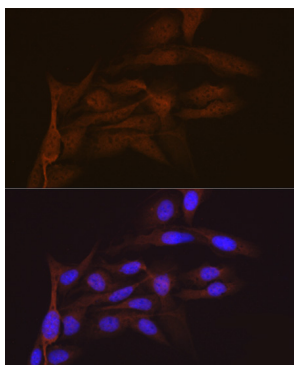
Western blot analysis of extracts of various cell lines, using SMC4 Rabbit mAb (A3559) at 1:1000 dilution. Secondary antibody: HRP Goat Anti-Rabbit IgG (H+L) (AS014) at 1:10000 dilution. Lysates/proteins: 25µg per lane. Blocking buffer: 3% nonfat dry milk in TBST. Detection: ECL Basic Kit (RM00020). Exposure time: 1s.



Immunofluorescence analysis of C6 cells using SMC4 Rabbit mAb (A3559) at dilution of 1:100 (40x lens). Blue: DAPI for nuclear staining.



Immunofluorescence analysis of NIH/3T3 cells using SMC4 Rabbit mAb (A3559) at dilution of 1:100 (40x lens). Blue: DAPI for nuclear staining.



Immunofluorescence analysis of U-2 OS cells using SMC4 Rabbit mAb (A3559) at dilution of 1:100 (40x lens). Blue: DAPI for nuclear staining.