

CoREST/RCOR1 Rabbit mAb

Catalog No.: A3568 **Recombinant** **1 Publications**

Basic Information

Observed MW

65kDa

Calculated MW

53kDa

Category

Primary antibody

Applications

WB,IHC-P,IP,(ELISA),ChIP

Cross-Reactivity

Human, Mouse, Rat

CloneNo number

ARC2044

Background

This gene encodes a protein that is well-conserved, downregulated at birth, and with a specific role in determining neural cell differentiation. The encoded protein binds to the C-terminal domain of REST (repressor element-1 silencing transcription factor).

Recommended Dilutions

WB 1:500 - 1:2000

IHC-P 1:50 - 1:200

IP 0.5µg-4µg antibody for
200µg-400µg extracts of
whole cells

ELISA Recommended starting
concentration is 1 µg/mL.
Please optimize the
concentration based on
your specific assay
requirements.

ChIP 5µg antibody for
10µg-15µg of Chromatin

Contact

 | 400-999-6126

 | cn.market@abclonal.com.cn

Immunogen Information

Gene ID

23186

Swiss Prot

Q9UKL0

Immunogen

A synthetic peptide corresponding to a sequence within amino acids 1-100 of human CoREST/RCOR1 (Q9UKL0).

Synonyms

RCOR; COREST; CoREST/RCOR1

Product Information

Source

Rabbit

Isotype

IgG

Purification

Affinity purification

Storage

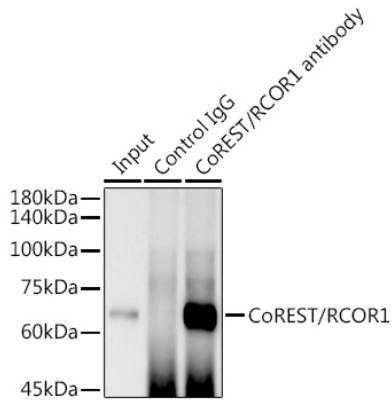
Store at -20°C. Avoid freeze / thaw cycles.

Buffer: PBS with 0.02% sodium azide,0.05% BSA,50% glycerol,pH7.3.

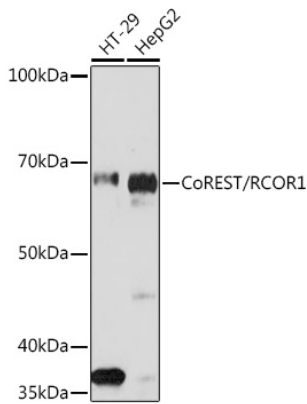


| www.abclonal.com.cn

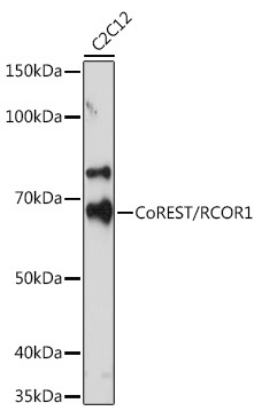
Validation Data



Immunoprecipitation analysis of 300 µg extracts of THP-1 cells using 3 µg CoREST/RCOR1 antibody (A3568). Western blot was performed from the immunoprecipitate using CoREST/RCOR1 antibody (A3568) at a dilution of 1:1000.

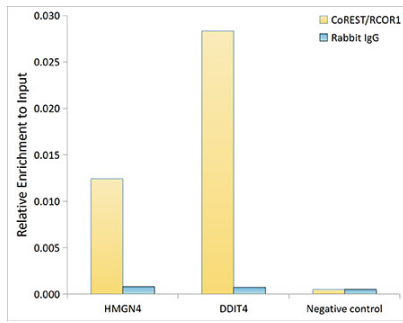


Western blot analysis of various lysates using CoREST/RCOR1 Rabbit mAb (A3568) at 1:1000 dilution. Secondary antibody: HRP-conjugated Goat anti-Rabbit IgG (H+L) (AS014) at 1:10000 dilution. Lysates/proteins: 25µg per lane. Blocking buffer: 3% nonfat dry milk in TBST. Detection: ECL Basic Kit (RM00020). Exposure time: 3min.

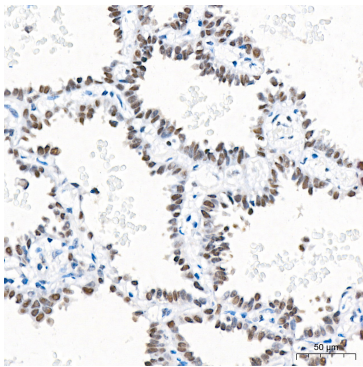


Western blot analysis of lysates from C2C12 cells, using CoREST/RCOR1 Rabbit mAb (A3568) at 1:500 dilution. Secondary antibody: HRP-conjugated Goat anti-Rabbit IgG (H+L) (AS014) at 1:10000 dilution. Lysates/proteins: 25µg per lane. Blocking buffer: 3% nonfat dry milk in TBST. Detection: ECL Enhanced Kit (RM00021). Exposure time: 3min.

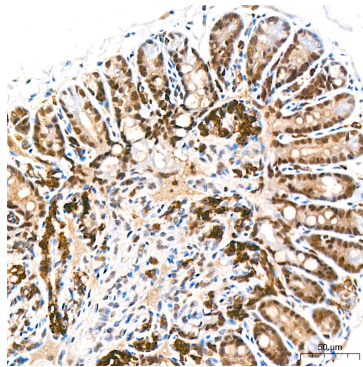
Validation Data



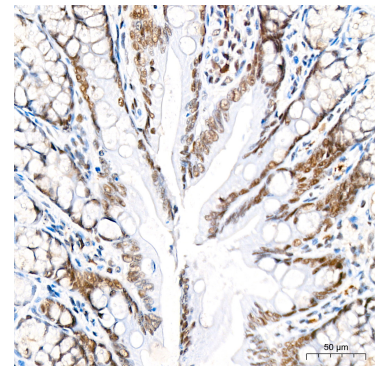
Chromatin immunoprecipitation analysis of extracts of HepG2 cells, using CoREST/RCOR1 antibody (A3568) and rabbit IgG. The amount of immunoprecipitated DNA was checked by quantitative PCR. Histogram was constructed by the ratios of the immunoprecipitated DNA to the input.



Immunohistochemistry analysis of paraffin-embedded Human lung adenocarcinoma tissue using CoREST/RCOR1 Rabbit mAb (A3568) at a dilution of 1:200 (40x lens). High pressure antigen retrieval performed with 0.01M Tris-EDTA Buffer (pH 9.0) prior to IHC staining.



Immunohistochemistry analysis of paraffin-embedded Mouse colon tissue using CoREST/RCOR1 Rabbit mAb (A3568) at a dilution of 1:200 (40x lens). High pressure antigen retrieval performed with 0.01M Tris-EDTA Buffer (pH 9.0) prior to IHC staining.



Immunohistochemistry analysis of paraffin-embedded Rat colon tissue using CoREST/RCOR1 Rabbit mAb (A3568) at a dilution of 1:200 (40x lens). High pressure antigen retrieval performed with 0.01M Tris-EDTA Buffer (pH 9.0) prior to IHC staining.