

[KO Validated] NRF2 Rabbit mAb

Catalog No.: A3577

KO Validated
Recombinant
5 Publications

Basic Information

Observed MW

103kDa

Calculated MW

68kDa

Category

Primary antibody

Applications

WB,IP,ELISA,ChIP

Cross-Reactivity

Human

CloneNo number

ARC0806

Background

This gene encodes a transcription factor which is a member of a small family of basic leucine zipper (bZIP) proteins. The encoded transcription factor regulates genes which contain antioxidant response elements (ARE) in their promoters; many of these genes encode proteins involved in response to injury and inflammation which includes the production of free radicals. Multiple transcript variants encoding different isoforms have been characterized for this gene.

Recommended Dilutions

WB 1:1000 - 1:2000

IP 0.5µg-4µg antibody for
200µg-400µg extracts of
whole cells

ELISA Recommended starting
concentration is 1 µg/mL.
Please optimize the
concentration based on
your specific assay
requirements.

ChIP 5µg antibody for
5µg-10µg of Chromatin

Immunogen Information

Gene ID

4780

Swiss Prot

Q16236

Immunogen

A synthetic peptide corresponding to a sequence within amino acids 505-605 of human NRF2 (NP_006155.2).

Synonyms

NRF2; HEBP1; Nrf-2; IMDDHH; F2

Product Information

Source

Rabbit

Isotype

IgG

Purification

Affinity purification

Storage

Store at -20°C. Avoid freeze / thaw cycles.

Buffer: PBS with 0.02% sodium azide,0.05% BSA,50% glycerol,pH7.3.

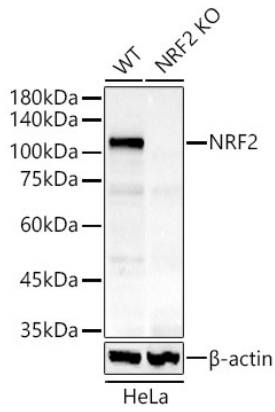
Contact

 | 400-999-6126

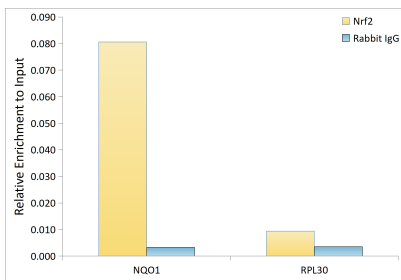
 | cn.market@abclonal.com.cn

 | www.abclonal.com.cn

Validation Data



Western blot analysis of extracts from wild type (WT) and NRF2 knockout (KO) HeLa cells, using [KO Validated] NRF2 Rabbit mAb (A3577) at 1:1000 dilution.
Secondary antibody: HRP-conjugated Goat anti-Rabbit IgG (H+L) (AS014) at 1:10000 dilution.
Lysates/proteins: 25µg per lane.
Blocking buffer: 3% nonfat dry milk in TBST.
Detection: ECL Basic Kit (RM00020).
Exposure time: 60s.



Chromatin immunoprecipitation was performed with cross-linked chromatin from HepG2 cells, using Nrf2 Rabbit mAb (A3577) and rabbit IgG (AC042). The amount of immunoprecipitated DNA was checked by quantitative PCR. Histogram compares the ratio of the immunoprecipitated DNA versus the input.