

CCT6A Rabbit pAb

Catalog No.: A3589

2 Publications

Basic Information

Observed MW

58kDa

Calculated MW

58kDa

Category

Primary antibody

Applications

ELISA, WB

Cross-Reactivity

Human, Mouse, Rat

Background

The protein encoded by this gene is a molecular chaperone that is a member of the chaperonin containing TCP1 complex (CCT), also known as the TCP1 ring complex (TRiC). This complex consists of two identical stacked rings, each containing eight different proteins. Unfolded polypeptides enter the central cavity of the complex and are folded in an ATP-dependent manner. The complex folds various proteins, including actin and tubulin. Alternate transcriptional splice variants of this gene, encoding different isoforms, have been characterized. In addition, several pseudogenes of this gene have been located.

Recommended Dilutions

WB 1:500 - 1:1000

Immunogen Information

Gene ID

908

Swiss Prot

P40227

Immunogen

Recombinant fusion protein containing a sequence corresponding to amino acids 80-250 of human CCT6A (NP_001753.1).

Synonyms

CCT6; Cctz; HTR3; TCPZ; TCP20; MoDP-2; TTCP20; CCT-zeta; CCT-zeta-1; TCP-1-zeta; CCT6A

Contact

 | 400-999-6126 | cn.market@abclonal.com.cn | www.abclonal.com.cn

Product Information

Source

Rabbit

Isotype

IgG

Purification

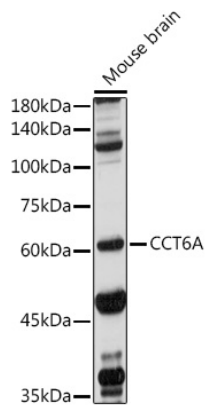
Affinity purification

Storage

Store at -20°C. Avoid freeze / thaw cycles.

Buffer: PBS with 0.02% sodium azide, 50% glycerol, pH 7.3.

Validation Data



Western blot analysis of extracts of Mouse brain, using CCT6A antibody (A3589) at 1:1000 dilution.
Secondary antibody: HRP Goat Anti-Rabbit IgG (H+L) (AS014) at 1:10000 dilution.
Lysates/proteins: 25µg per lane.
Blocking buffer: 3% nonfat dry milk in TBST.
Detection: ECL Basic Kit (RM00020).
Exposure time: 10s.