

Alpha Internexin Rabbit mAb

Catalog No.: A3596 **Recombinant**

Basic Information

Observed MW

62-67kDa

Calculated MW

55kDa

Category

Primary antibody

Applications

ELISA, WB, IHC-P, IF/ICC

Cross-Reactivity

Human, Mouse, Rat

CloneNo number

ARC2054

Background

Neurofilaments are type IV intermediate filament heteropolymers composed of light, medium, and heavy chains. Neurofilaments comprise the axoskeleton and they functionally maintain the neuronal caliber. They may also play a role in intracellular transport to axons and dendrites. This gene is a member of the intermediate filament family and is involved in the morphogenesis of neurons.

Recommended Dilutions

WB	1:500 - 1:2000
IHC-P	1:50 - 1:200
IF/ICC	1:50 - 1:200

Immunogen Information

Gene ID

9118

Swiss Prot

Q16352

Immunogen

A synthetic peptide corresponding to a sequence within amino acids 350-450 of human Alpha Internexin (Q16352).

Synonyms

NEF5; NF66; NF-66; TXBP-1; Alpha Internexin

Contact

☎ | 400-999-6126

✉ | cn.market@abclonal.com.cn

🌐 | www.abclonal.com.cn

Product Information

Source

Rabbit

Isotype

IgG

Purification

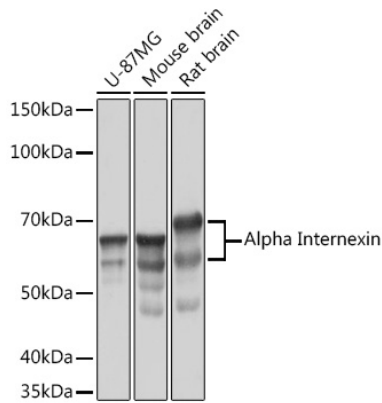
Affinity purification

Storage

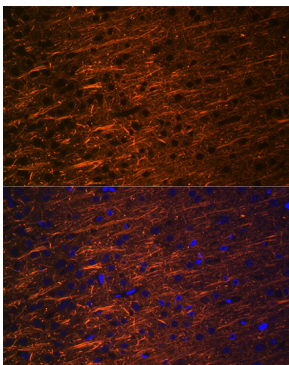
Store at -20°C. Avoid freeze / thaw cycles.

Buffer: PBS with 0.02% sodium azide, 0.05% BSA, 50% glycerol, pH7.3.

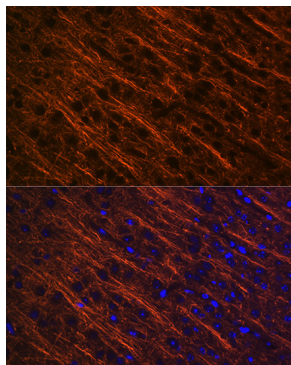
Validation Data



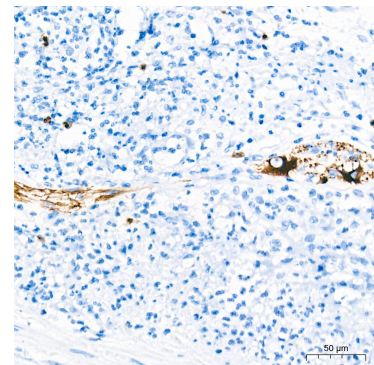
Western blot analysis of various lysates using Alpha Internexin Rabbit mAb (A3596) at 1:1000 dilution. Secondary antibody: HRP Goat Anti-Rabbit IgG (H+L) (AS014) at 1:10000 dilution. Lysates/proteins: 25µg per lane. Blocking buffer: 3% nonfat dry milk in TBST. Detection: ECL Basic Kit (RM00020). Exposure time: 5s.



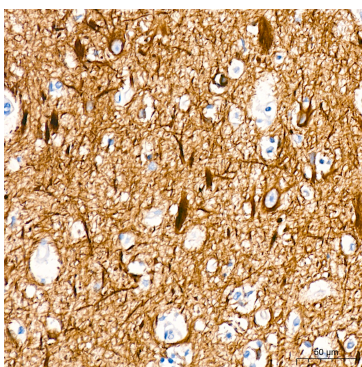
Immunofluorescence analysis of paraffin-embedded rat brain using Alpha Internexin Rabbit mAb (A3596) at dilution of 1:100 (40x lens). Secondary antibody: Cy3 Goat Anti-Rabbit IgG (H+L) (AS007) at 1:500 dilution. Blue: DAPI for nuclear staining.



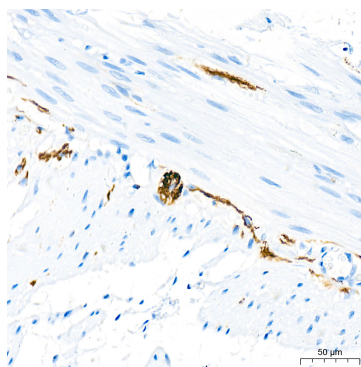
Immunofluorescence analysis of paraffin-embedded mouse brain using Alpha Internexin Rabbit mAb (A3596) at dilution of 1:100 (40x lens). Secondary antibody: Cy3 Goat Anti-Rabbit IgG (H+L) (AS007) at 1:500 dilution. Blue: DAPI for nuclear staining.



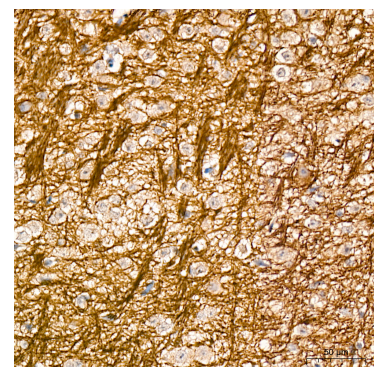
Immunohistochemistry analysis of Alpha Internexin in paraffin-embedded human appendix tissue using Alpha Internexin Rabbit mAb (A3596) at a dilution of 1:200 (40x lens). High pressure antigen retrieval was performed with 0.01 M citrate buffer (pH 6.0) prior to IHC staining.



Immunohistochemistry analysis of Alpha Internexin in paraffin-embedded human brain tissue using Alpha Internexin Rabbit mAb (A3596) at a dilution of 1:200 (40x lens). High pressure antigen retrieval was performed with 0.01 M citrate buffer (pH 6.0) prior to IHC staining.

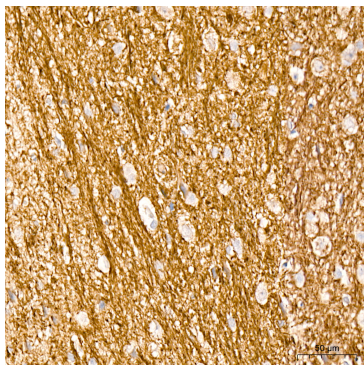


Immunohistochemistry analysis of Alpha Internexin in paraffin-embedded human colon tissue using Alpha Internexin Rabbit mAb (A3596) at a dilution of 1:200 (40x lens). High pressure antigen retrieval was performed with 0.01 M citrate buffer (pH 6.0) prior to IHC staining.



Immunohistochemistry analysis of Alpha Internexin in paraffin-embedded mouse brain tissue using Alpha Internexin Rabbit mAb (A3596) at a dilution of 1:200 (40x lens). High pressure antigen retrieval was performed with 0.01 M citrate buffer (pH 6.0) prior to IHC staining.

Validation Data



Immunohistochemistry analysis of Alpha Internexin in paraffin-embedded rat brain tissue using Alpha Internexin Rabbit mAb (A3596) at a dilution of 1:200 (40x lens). High pressure antigen retrieval was performed with 0.01 M citrate buffer (pH 6.0) prior to IHC staining.