

GUCY2D Rabbit pAb

Catalog No.: A3605

Basic Information

Observed MW

95kDa

Calculated MW

120kDa

Category

Primary antibody

Applications

ELISA, WB

Cross-Reactivity

Human, Mouse, Rat

Background

This gene encodes a retina-specific guanylate cyclase, which is a member of the membrane guanylyl cyclase family. Like other membrane guanylyl cyclases, this enzyme has a hydrophobic amino-terminal signal sequence followed by a large extracellular domain, a single membrane spanning domain, a kinase homology domain, and a guanylyl cyclase catalytic domain. In contrast to other membrane guanylyl cyclases, this enzyme is not activated by natriuretic peptides. Mutations in this gene result in Leber congenital amaurosis and cone-rod dystrophy-6 diseases.

Recommended Dilutions

WB 1:200 - 1:2000

Immunogen Information

Gene ID

3000

Swiss Prot

Q02846

Immunogen

Recombinant fusion protein containing a sequence corresponding to amino acids 52-350 of human GUCY2D (NP_000171.1).

Synonyms

LCA; CACD; CG-E; CYGD; LCA1; RCD2; CACD1; CORD5; CORD6; GUC2D; ROSGC; retGC; CSNB1; GUC1A4; RETGC-1; ROS-GC1; GUCY2D

Contact

 | 400-999-6126

 | cn.market@abclonal.com.cn

 | www.abclonal.com.cn

Product Information

Source

Rabbit

Isotype

IgG

Purification

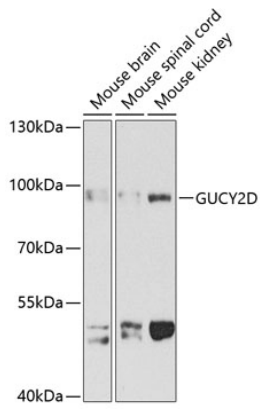
Affinity purification

Storage

Store at -20°C. Avoid freeze / thaw cycles.

Buffer: PBS with 0.02% sodium azide, 50% glycerol, pH7.3.

Validation Data



Western blot analysis of extracts of various cell lines, using GUCY2D antibody (A3605) at 1:1000 dilution.
Secondary antibody: HRP Goat Anti-Rabbit IgG (H+L) (AS014) at 1:10000 dilution.
Lysates/proteins: 25µg per lane.
Blocking buffer: 3% nonfat dry milk in TBST.
Detection: ECL Basic Kit (RM00020).
Exposure time: 90s.