

Integrin alpha 6 (ITGA6/CD49f) Mouse mAb

Catalog No.: A3611 **1 Publications**

Basic Information

Observed MW

130kDa

Calculated MW

127kDa

Category

Primary antibody

Applications

ELISA, WB, IHC-P, IF/ICC, FC

Cross-Reactivity

Human

Background

The gene encodes a member of the integrin alpha chain family of proteins. Integrins are heterodimeric integral membrane proteins composed of an alpha chain and a beta chain that function in cell surface adhesion and signaling. The encoded preproprotein is proteolytically processed to generate light and heavy chains that comprise the alpha 6 subunit. This subunit may associate with a beta 1 or beta 4 subunit to form an integrin that interacts with extracellular matrix proteins including members of the laminin family. The alpha 6 beta 4 integrin may promote tumorigenesis, while the alpha 6 beta 1 integrin may negatively regulate erbB2/HER2 signaling. Alternative splicing results in multiple transcript variants.

Recommended Dilutions

| | |
|---------------|----------------|
| WB | 1:500 - 1:1000 |
| IHC-P | 1:50 - 1:100 |
| IF/ICC | 1:20 - 1:50 |
| FC | 1:20 - 1:50 |

Immunogen Information

Gene ID

3655

Swiss Prot

P23229

Immunogen

A synthetic peptide of human Integrin alpha 6 (ITGA6/CD49f)

Synonyms

JEB6; CD49f; VLA-6; ITGA6A; ITGA6B; Integrin alpha 6 (ITGA6/CD49f)

Contact

 | 400-999-6126 | cn.market@abclonal.com.cn | www.abclonal.com.cn

Product Information

Source

Mouse

Isotype

IgG

Purification

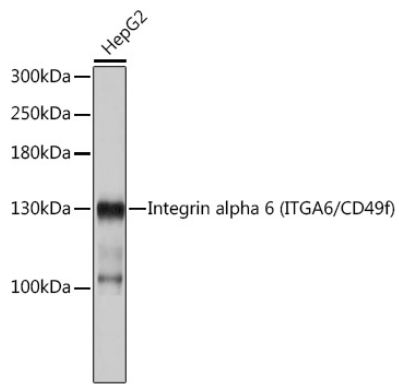
Affinity purification

Storage

Store at 4°C. Avoid freeze / thaw cycles.

Buffer: PBS with 0.02% sodium azide, pH7.3.

Validation Data



Western blot analysis of lysates from HepG2 cells, using Integrin alpha 6 (ITGA6/CD49f) Mouse mAb (A3611).

Secondary antibody: HRP Goat Anti-Mouse IgG (H+L) (AS003) at 1:10000 dilution.

Lysates/proteins: 25µg per lane.

Blocking buffer: 3% nonfat dry milk in TBST.