

Dynein intermediate chain 1 Rabbit mAb

Catalog No.: A3624 **Recombinant**

Basic Information

Observed MW

79kDa

Calculated MW

79kDa

Category

Primary antibody

Applications

ELISA, WB

Cross-Reactivity

Mouse, Rat

CloneNo number

ARC2061

Background

This gene encodes a member of the dynein intermediate chain family. The encoded protein is part of the dynein complex in respiratory cilia. The inner- and outer-arm dyneins, which bridge between the doublet microtubules in axonemes, are the force-generating proteins responsible for the sliding movement in axonemes. The intermediate and light chains, thought to form the base of the dynein arm, help mediate attachment and may also participate in regulating dynein activity. Mutations in this gene result in abnormal ciliary ultrastructure and function associated with primary ciliary dyskinesia and Kartagener syndrome. Alternative splicing results in multiple transcript variants.

Recommended Dilutions

WB 1:500 - 1:1000

Immunogen Information

Gene ID

27019

Swiss Prot

Q9UI46

Immunogen

Recombinant fusion protein containing a sequence corresponding to amino acids 1-200 of human Dynein intermediate chain 1 (Q9UI46).

Synonyms

PCD; DIC1; ICS1; CILD1; Dynein intermediate chain 1

Contact

 | 400-999-6126 | cn.market@abclonal.com.cn | www.abclonal.com.cn

Product Information

Source

Rabbit

Isotype

IgG

Purification

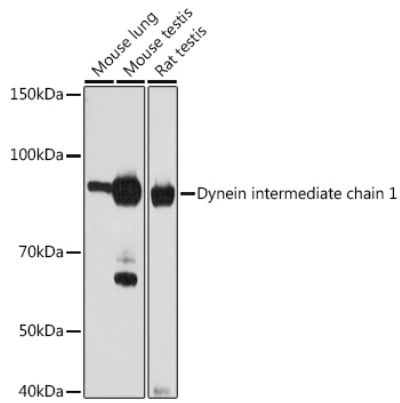
Affinity purification

Storage

Store at -20°C. Avoid freeze / thaw cycles.

Buffer: PBS with 0.02% sodium azide, 0.05% BSA, 50% glycerol, pH7.3.

Validation Data



Western blot analysis of extracts of various cell lines, using Dynein intermediate chain 1 antibody (A3624) at 1:1000 dilution.

Secondary antibody: HRP Goat Anti-Rabbit IgG (H+L) (AS014) at 1:10000 dilution.

Lysates/proteins: 25µg per lane.

Blocking buffer: 3% nonfat dry milk in TBST.

Detection: ECL Basic Kit (RM00020).

Exposure time: 60s.