

CLEC11A Rabbit pAb

Catalog No.: A3634

Basic Information

Observed MW

46kDa

Calculated MW

36kDa

Category

Primary antibody

Applications

ELISA, WB

Cross-Reactivity

Human, Mouse

Background

This gene encodes a member of the C-type lectin superfamily. The encoded protein is a secreted sulfated glycoprotein and functions as a growth factor for primitive hematopoietic progenitor cells. An alternative splice variant has been described but its biological nature has not been determined.

Recommended Dilutions

WB 1:200 - 1:2000

Immunogen Information

Gene ID

6320

Swiss Prot

Q9Y240

Immunogen

Recombinant fusion protein containing a sequence corresponding to amino acids 22-323 of human CLEC11A (NP_002966.1).

Synonyms

P47; SCGF; LSLCL; CLECSF3; CLEC11A

Contact

 | 400-999-6126

 | cn.market@abclonal.com.cn

 | www.abclonal.com.cn

Product Information

Source

Rabbit

Isotype

IgG

Purification

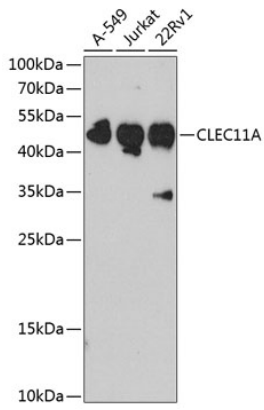
Affinity purification

Storage

Store at -20°C. Avoid freeze / thaw cycles.

Buffer: PBS with 0.02% sodium azide, 50% glycerol, pH 7.3.

Validation Data



Western blot analysis of extracts of various cell lines, using CLEC11A antibody (A3634) at 1:1000 dilution.
Secondary antibody: HRP Goat Anti-Rabbit IgG (H+L) (AS014) at 1:10000 dilution.
Lysates/proteins: 25µg per lane.
Blocking buffer: 3% nonfat dry milk in TBST.
Detection: ECL Basic Kit (RM00020).
Exposure time: 90s.