

# SLC3A2/CD98hc Rabbit mAb

Catalog No.: A3658 **Recombinant** **5 Publications**

## Basic Information

### Observed MW

90kDa

### Calculated MW

58kDa

### Category

Primary antibody

### Applications

WB,ELISA

### Cross-Reactivity

Human

### CloneNo number

ARC0816

## Background

This gene is a member of the solute carrier family and encodes a cell surface, transmembrane protein. The protein exists as the heavy chain of a heterodimer, covalently bound through di-sulfide bonds to one of several possible light chains. The encoded transporter plays a role in regulation of intracellular calcium levels and transports L-type amino acids. Alternatively spliced transcript variants, encoding different isoforms, have been characterized.

## Recommended Dilutions

WB 1:500 - 1:1000

## Immunogen Information

### Gene ID

6520

### Swiss Prot

P08195

### Immunogen

A synthetic peptide corresponding to a sequence within amino acids 350-450 of human SLC3A2/CD98hc (P08195).

### Synonyms

4F2; CD98; MDU1; 4F2HC; 4T2HC; NACAE; CD98HC; SLC3A2/CD98hc

## Contact

 | 400-999-6126

 | [cn.market@abclonal.com.cn](mailto:cn.market@abclonal.com.cn)

 | [www.abclonal.com.cn](http://www.abclonal.com.cn)

## Product Information

### Source

Rabbit

### Isotype

IgG

### Purification

Affinity purification

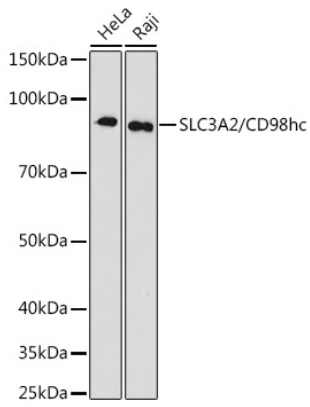
### Storage

Store at -20°C. Avoid freeze / thaw cycles.

Buffer: PBS with 0.02% sodium azide,0.05% BSA,50% glycerol,pH7.3.

## Validation Data

---



Western blot analysis of various lysates using SLC3A2/CD98hc Rabbit mAb (A3658) at 1:1000 dilution.  
Secondary antibody: HRP-conjugated Goat anti-Rabbit IgG (H+L) (AS014) at 1:10000 dilution.  
Lysates/proteins: 25µg per lane.  
Blocking buffer: 3% nonfat dry milk in TBST.  
Detection: ECL Basic Kit (RM00020).  
Exposure time: 180s.