

RAB31 Rabbit pAb

Catalog No.: A3667

Basic Information

Observed MW

22kDa

Calculated MW

22kDa

Category

Primary antibody

Applications

ELISA, WB, IF/ICC

Cross-Reactivity

Human, Mouse, Rat

Background

Enables GDP binding activity and GTP binding activity. Involved in several processes, including Golgi to plasma membrane protein transport; cellular response to insulin stimulus; and receptor internalization. Located in early endosome; phagocytic vesicle; and trans-Golgi network membrane. Biomarker of severe acute respiratory syndrome.

Recommended Dilutions

WB 1:200 - 1:2000

IF/ICC 1:50 - 1:200

Immunogen Information

Gene ID

11031

Swiss Prot

Q13636

Immunogen

Recombinant fusion protein containing a sequence corresponding to amino acids 1-195 of human RAB31 (NP_006859.2).

Synonyms

Rab22B; RAB31

Contact

☎ | 400-999-6126

✉ | cn.market@abclonal.com.cn

🌐 | www.abclonal.com.cn

Product Information

Source

Rabbit

Isotype

IgG

Purification

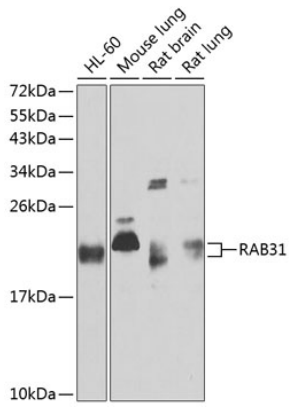
Affinity purification

Storage

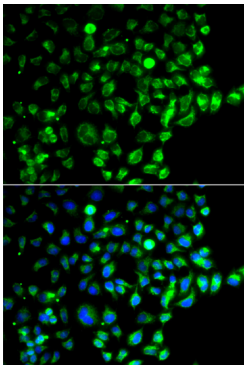
Store at -20°C. Avoid freeze / thaw cycles.

Buffer: PBS with 0.02% sodium azide, 50% glycerol, pH 7.3.

Validation Data



Western blot analysis of extracts of various cell lines, using RAB31 antibody (A3667) at 1:1000 dilution.
Secondary antibody: HRP Goat Anti-Rabbit IgG (H+L) (AS014) at 1:10000 dilution.
Lysates/proteins: 25µg per lane.
Blocking buffer: 3% nonfat dry milk in TBST.
Detection: ECL Basic Kit (RM00020).
Exposure time: 30s.



Immunofluorescence analysis of A549 cells using RAB31 antibody (A3667). Blue: DAPI for nuclear staining.