

# EAAT2/SLC1A2 Rabbit mAb

Catalog No.: A3679 **Recombinant** **1 Publications**

## Basic Information

### Observed MW

70kDa

### Calculated MW

62kDa

### Category

Primary antibody

### Applications

ELISA, WB

### Cross-Reactivity

Human, Mouse, Rat

### CloneNo number

ARC0821

## Background

This gene encodes a member of a family of solute transporter proteins. The membrane-bound protein is the principal transporter that clears the excitatory neurotransmitter glutamate from the extracellular space at synapses in the central nervous system. Glutamate clearance is necessary for proper synaptic activation and to prevent neuronal damage from excessive activation of glutamate receptors. Improper regulation of this gene is thought to be associated with several neurological disorders. Alternatively spliced transcript variants of this gene have been identified.

## Recommended Dilutions

WB 1:500 - 1:2000

## Immunogen Information

### Gene ID

6506

### Swiss Prot

P43004

### Immunogen

A synthetic peptide corresponding to a sequence within amino acids 150-250 of human EAAT2/SLC1A2 (P43004).

### Synonyms

GLT1; HBGT; DEE41; EAAT2; GLT-1; EIEE41; EAAT2/SLC1A2

## Contact

 | 400-999-6126

 | [cn.market@abclonal.com.cn](mailto:cn.market@abclonal.com.cn)

 | [www.abclonal.com.cn](http://www.abclonal.com.cn)

## Product Information

### Source

Rabbit

### Isotype

IgG

### Purification

Affinity purification

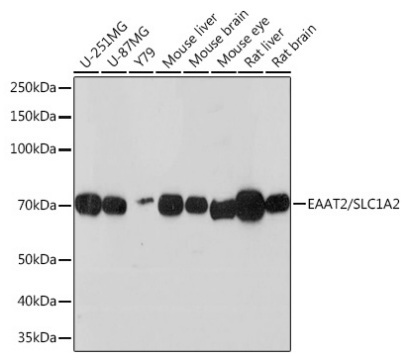
### Storage

Store at -20°C. Avoid freeze / thaw cycles.

Buffer: PBS with 0.02% sodium azide, 0.05% BSA, 50% glycerol, pH7.3.

## Validation Data

---



Western blot analysis of various lysates using EAAT2/SLC1A2 Rabbit mAb (A3679) at 1:1000 dilution.  
Secondary antibody: HRP Goat Anti-Rabbit IgG (H+L) (AS014) at 1:10000 dilution.  
Lysates/proteins: 25µg per lane.  
Blocking buffer: 3% nonfat dry milk in TBST.  
Detection: ECL Basic Kit (RM00020).  
Exposure time: 30s.