

# ERO1LB Rabbit pAb

Catalog No.: A3682

## Basic Information

### Observed MW

48kDa

### Calculated MW

54kDa

### Category

Primary antibody

### Applications

ELISA, WB

### Cross-Reactivity

Human, Mouse

## Background

Enables thiol oxidase activity. Involved in protein folding in endoplasmic reticulum. Predicted to be located in membrane. Predicted to be active in endoplasmic reticulum membrane.

## Recommended Dilutions

WB 1:500 - 1:2000

## Immunogen Information

### Gene ID

56605

### Swiss Prot

Q86YB8

### Immunogen

Recombinant fusion protein containing a sequence corresponding to amino acids 34-230 of human ERO1LB (NP\_063944.3).

### Synonyms

ERO1LB; Ero1beta

## Contact

☎ | 400-999-6126

✉ | [cn.market@abclonal.com.cn](mailto:cn.market@abclonal.com.cn)

🌐 | [www.abclonal.com.cn](http://www.abclonal.com.cn)

## Product Information

### Source

Rabbit

### Isotype

IgG

### Purification

Affinity purification

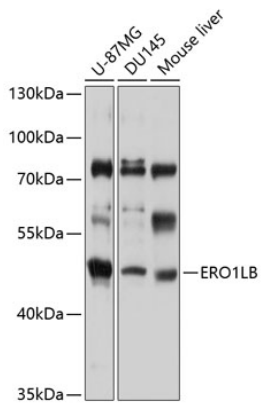
### Storage

Store at -20°C. Avoid freeze / thaw cycles.

Buffer: PBS with 0.02% sodium azide, 50% glycerol, pH 7.3.

## Validation Data

---



Western blot analysis of extracts of various cell lines, using ERO1LB antibody (A3682) at 1:1000 dilution.  
Secondary antibody: HRP Goat Anti-Rabbit IgG (H+L) (AS014) at 1:10000 dilution.  
Lysates/proteins: 25µg per lane.  
Blocking buffer: 3% nonfat dry milk in TBST.  
Detection: ECL Basic Kit (RM00020).  
Exposure time: 5s.