

POU2F1/OCT1 Rabbit mAb

Catalog No.: A3683 **Recombinant**

Basic Information

Observed MW

90kDa

Calculated MW

76kDa

Category

Primary antibody

Applications

ELISA, WB, IHC-P

Cross-Reactivity

Human, Mouse

CloneNo number

ARC0822

Background

The OCT1 transcription factor was among the first identified members of the POU transcription factor family (summarized by Sturm et al., 1993 [PubMed 8314572]). Members of this family contain the POU domain, a 160-amino acid region necessary for DNA binding to the octameric sequence ATGCAAAT.

Recommended Dilutions

WB	1:500 - 1:2000
IHC-P	1:50 - 1:200

Immunogen Information

Gene ID

5451

Swiss Prot

P14859

Immunogen

Recombinant fusion protein containing a sequence corresponding to amino acids 1-162 of human POU2F1/POU2F1/OCT1 (P14859).

Synonyms

OCT1; OTF1; Oct1Z; oct-1B; POU2F1/OCT1

Contact

 | 400-999-6126

 | cn.market@abclonal.com.cn

 | www.abclonal.com.cn

Product Information

Source

Rabbit

Isotype

IgG

Purification

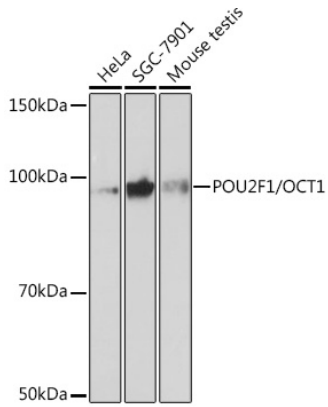
Affinity purification

Storage

Store at -20°C. Avoid freeze / thaw cycles.

Buffer: PBS with 0.02% sodium azide, 0.05% BSA, 50% glycerol, pH7.3.

Validation Data



Western blot analysis of various lysates using POU2F1/POU2F1/OCT1 Rabbit mAb (A3683) at 1:1000 dilution.

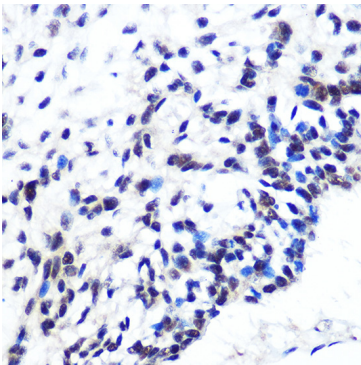
Secondary antibody: HRP Goat Anti-Rabbit IgG (H+L) (AS014) at 1:10000 dilution.

Lysates/proteins: 25µg per lane.

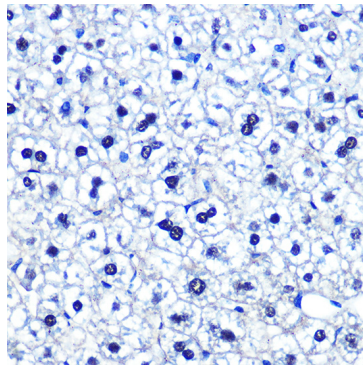
Blocking buffer: 3% nonfat dry milk in TBST.

Detection: ECL Basic Kit (RM00020).

Exposure time: 3min.



Immunohistochemistry analysis of paraffin-embedded human esophageal cancer using POU2F1/POU2F1/OCT1 Rabbit mAb (A3683) at dilution of 1:100 (40x lens). Perform microwave antigen retrieval with 10 mM PBS buffer pH 7.2 before commencing with IHC staining protocol.



Immunohistochemistry analysis of paraffin-embedded mouse liver using POU2F1/POU2F1/OCT1 Rabbit mAb (A3683) at dilution of 1:100 (40x lens). Perform microwave antigen retrieval with 10 mM PBS buffer pH 7.2 before commencing with IHC staining protocol.