

Guanylyl Cyclase beta 1 (GUCY1B3) Rabbit mAb

Catalog No.: A3687 **Recombinant** **1 Publications**

Basic Information

Observed MW

71kDa

Calculated MW

71kDa

Category

Primary antibody

Applications

WB,IHC-P,IF/ICC,ELISA

Cross-Reactivity

Human, Mouse, Rat

CloneNo number

ARC2071

Background

This gene encodes the beta subunit of the soluble guanylate cyclase (sGC), which catalyzes the conversion of GTP (guanosine triphosphate) to cGMP (cyclic guanosine monophosphate). The encoded protein contains an HNOX domain, which serves as a receptor for ligands such as nitric oxide, oxygen and nitrovasodilator drugs. Alternative splicing results in multiple transcript variants.

Recommended Dilutions

WB	1:1000 - 1:6000
IHC-P	1:200 - 1:800
IF/ICC	1:100 - 1:400
ELISA	Recommended starting concentration is 1 µg/mL. Please optimize the concentration based on your specific assay requirements.

Contact

	400-999-6126
	cn.market@abclonal.com.cn
	www.abclonal.com.cn

Immunogen Information

Gene ID

2983

Swiss Prot

Q02153

Immunogen

A synthetic peptide corresponding to a sequence within amino acids 1-100 of human Guanylyl Cyclase beta 1 (GUCY1B3) (Q02153).

Synonyms

GUCB3; GC-SB3; GUC1B3; GUCSB3; GUCY1B3; GC-S-beta-1; Guanylyl Cyclase beta 1 (GUCY1B3)

Product Information

Source

Rabbit

Isotype

IgG

Purification

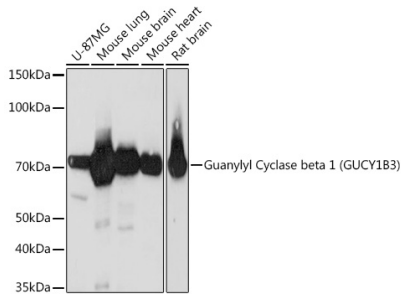
Affinity purification

Storage

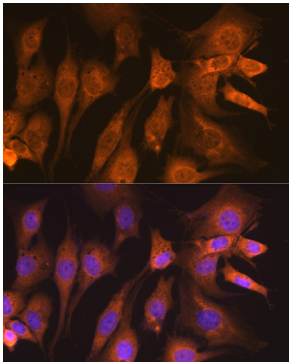
Store at -20°C. Avoid freeze / thaw cycles.

Buffer: PBS with 0.02% sodium azide,0.05% BSA,50% glycerol,pH7.3.

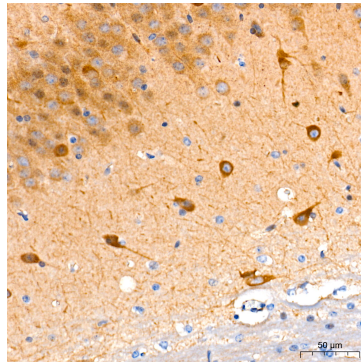
Validation Data



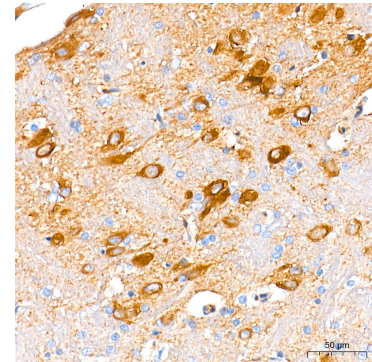
Western blot analysis of various lysates using Guanylyl Cyclase beta 1 (GUCY1B3) Rabbit mAb (A3687) at 1:1000 dilution.
Secondary antibody: HRP-conjugated Goat anti-Rabbit IgG (H+L) (AS014) at 1:10000 dilution.
Lysates/proteins: 25µg per lane.
Blocking buffer: 3% nonfat dry milk in TBST.
Detection: ECL Basic Kit (RM00020).
Exposure time: 3min.



Immunofluorescence analysis of NIH-3T3 cells using Guanylyl Cyclase beta 1 (GUCY1B3) Rabbit mAb (A3687) at dilution of 1:100 (40x lens). Secondary antibody: Cy3-conjugated Goat anti-Rabbit IgG (H+L) (AS007) at 1:500 dilution. Blue: DAPI for nuclear staining.



Immunohistochemistry analysis of paraffin-embedded Mouse brain tissue using Guanylyl Cyclase beta 1 (GUCY1B3) Rabbit mAb (A3687) at a dilution of 1:200 (40x lens). High pressure antigen retrieval performed with 0.01M Tris-EDTA Buffer (pH 9.0) prior to IHC staining.



Immunohistochemistry analysis of paraffin-embedded Rat brain tissue using Guanylyl Cyclase beta 1 (GUCY1B3) Rabbit mAb (A3687) at a dilution of 1:200 (40x lens). High pressure antigen retrieval performed with 0.01M Tris-EDTA Buffer (pH 9.0) prior to IHC staining.