

Plexin A1 Rabbit mAb

Catalog No.: A3698 **Recombinant** **1 Publications**

Basic Information

Observed MW

250kDa

Calculated MW

211kDa

Category

Primary antibody

Applications

WB, ELISA

Cross-Reactivity

Human, Mouse, Rat

CloneNo number

ARC2077

Background

Predicted to enable semaphorin receptor activity. Predicted to be involved in several processes, including generation of neurons; regulation of GTPase activity; and regulation of cell shape. Predicted to act upstream of or within dichotomous subdivision of terminal units involved in salivary gland branching; neuron projection morphogenesis; and regulation of smooth muscle cell migration. Located in cytosol and nucleoplasm.

Recommended Dilutions

WB 1:500 - 1:1000

ELISA Recommended starting concentration is 1 µg/mL. Please optimize the concentration based on your specific assay requirements.

Immunogen Information

Gene ID

5361

Swiss Prot

Q9UIW2

Immunogen

Synthetic peptide. This information is considered to be commercially sensitive.

Synonyms

NOV; NOV; PLXN1; DWOPNED; PLEXIN-A1; Plexin A1

Contact

☎ | 400-999-6126

✉ | cn.market@abclonal.com.cn

🌐 | www.abclonal.com.cn

Product Information

Source

Rabbit

Isotype

IgG

Purification

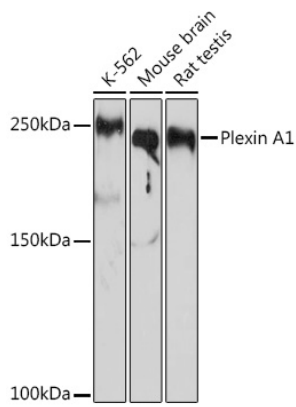
Affinity purification

Storage

Store at -20°C. Avoid freeze / thaw cycles.

Buffer: PBS containing 50% glycerol and 0.05% BSA, preserved with proclin300 or sodium azide (as specified on the Certificate of Analysis), pH 7.3.

Validation Data



Western blot analysis of various lysates using Plexin A1 Rabbit mAb (A3698) at 1:1000 dilution. Secondary antibody: HRP-conjugated Goat anti-Rabbit IgG (H+L) (AS014) at 1:10000 dilution. Lysates/proteins: 25µg per lane. Blocking buffer: 3% nonfat dry milk in TBST. Detection: ECL Basic Kit (RM00020). Exposure time: 10s.