

# ASNA1 Rabbit pAb

Catalog No.: A3746

## Basic Information

### Observed MW

39kDa

### Calculated MW

39kDa

### Category

Primary antibody

### Applications

ELISA,WB,IF/ICC

### Cross-Reactivity

Human, Mouse, Rat

## Background

This gene represents the human homolog of the bacterial *arsA* gene, encoding the arsenite-stimulated ATPase component of the arsenite transporter responsible for resistance to arsenicals. This protein is also a central component of a transmembrane domain (TMD) recognition complex (TRC) that is involved in the post-translational delivery of tail-anchored (TA) proteins from the cytosol to the endoplasmic reticulum (ER). It recognizes and selectively binds the TMD of TA proteins in the cytosol, and delivers them to the ER for insertion.

## Recommended Dilutions

WB 1:200 - 1:2000

IF/ICC 1:50 - 1:200

## Immunogen Information

### Gene ID

439

### Swiss Prot

O43681

### Immunogen

Recombinant fusion protein containing a sequence corresponding to amino acids 1-348 of human ASNA1 (NP\_004308.2).

### Synonyms

ARSA1; ASNA1; CMD2H; TRC40; ARSA-I; ASNA-I

## Contact

☎ | 400-999-6126

✉ | [cn.market@abclonal.com.cn](mailto:cn.market@abclonal.com.cn)

🌐 | [www.abclonal.com.cn](http://www.abclonal.com.cn)

## Product Information

### Source

Rabbit

### Isotype

IgG

### Purification

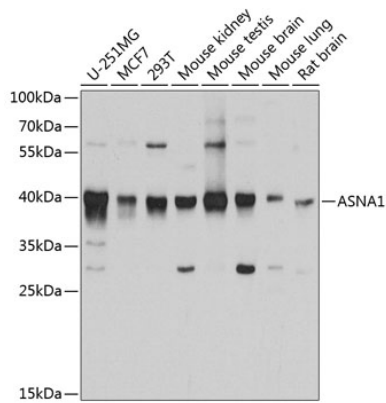
Affinity purification

### Storage

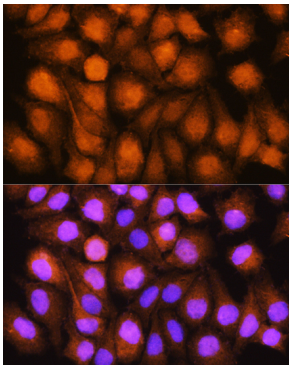
Store at -20°C. Avoid freeze / thaw cycles.

Buffer: PBS with 0.02% sodium azide,50% glycerol,pH7.3.

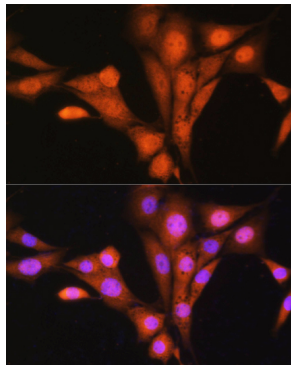
## Validation Data



Western blot analysis of extracts of various cell lines, using ASNA1 antibody (A3746) at 1:1000 dilution. Secondary antibody: HRP Goat Anti-Rabbit IgG (H+L) (AS014) at 1:10000 dilution. Lysates/proteins: 25µg per lane. Blocking buffer: 3% nonfat dry milk in TBST. Detection: ECL Basic Kit (RM00020). Exposure time: 90s.



Immunofluorescence analysis of HeLa cells using ASNA1 Rabbit pAb (A3746) at dilution of 1:100. Blue: DAPI for nuclear staining.



Immunofluorescence analysis of NIH/3T3 cells using ASNA1 Rabbit pAb (A3746) at dilution of 1:100. Blue: DAPI for nuclear staining.