

BCAT2 Rabbit pAb

Catalog No.: A3761 **1 Publications**

Basic Information

Observed MW

40kDa

Calculated MW

44kDa

Category

Primary antibody

Applications

WB

Cross-Reactivity

Human

Background

This gene encodes a branched chain aminotransferase found in mitochondria. The encoded protein forms a dimer that catalyzes the first step in the production of the branched chain amino acids leucine, isoleucine, and valine. Multiple transcript variants encoding different isoforms have been found for this gene.

Recommended Dilutions

WB 1:200 - 1:2000

Immunogen Information

Gene ID

587

Swiss Prot

O15382

Immunogen

A synthetic peptide of human BCAT2

Synonyms

BCAM; BCT2; HVLI; PP18; BCATM; BCAT2

Contact

☎ | 400-999-6126

✉ | cn.market@abclonal.com.cn

🌐 | www.abclonal.com.cn

Product Information

Source

Rabbit

Isotype

IgG

Purification

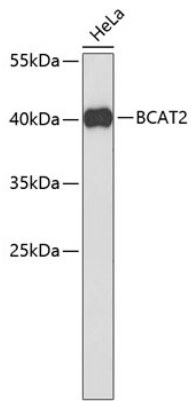
Affinity purification

Storage

Store at 4°C. Avoid freeze / thaw cycles.

Buffer: PBS with 0.02% sodium azide, pH7.3.

Validation Data



Western blot analysis of extracts of HeLa cells, using BCAT2 antibody (A3761).
Secondary antibody: HRP Goat Anti-Rabbit IgG (H+L) (AS014) at 1:10000 dilution.
Lysates/proteins: 25µg per lane.
Blocking buffer: 3% nonfat dry milk in TBST.