

Collagen III alpha 1/COL3A1 Rabbit pAb

Catalog No.: A3795 **32 Publications**

Basic Information

Observed MW

150kDa

Calculated MW

139kDa

Category

Primary antibody

Applications

ELISA,WB,IF/ICC

Cross-Reactivity

Human, Mouse

Background

This gene encodes the pro-alpha1 chains of type III collagen, a fibrillar collagen that is found in extensible connective tissues such as skin, lung, uterus, intestine and the vascular system, frequently in association with type I collagen. Mutations in this gene are associated with Ehlers-Danlos syndrome type IV, and with aortic and arterial aneurysms.

Recommended Dilutions

WB	1:2000 - 1:10000
IF/ICC	1:50 - 1:200

Immunogen Information

Gene ID

1281

Swiss Prot

P02461

Immunogen

Recombinant fusion protein containing a sequence corresponding to amino acids 1201-1301 of human Collagen III alpha 1/COL3A1 (NP_000081.2).

Synonyms

EDS4A; EDSVASC; PMGEDSV; Collagen III alpha 1/COL3A1

Contact

 | 400-999-6126

 | cn.market@abclonal.com.cn

 | www.abclonal.com.cn

Product Information

Source

Rabbit

Isotype

IgG

Purification

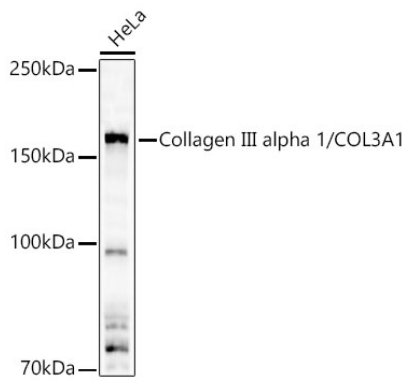
Affinity purification

Storage

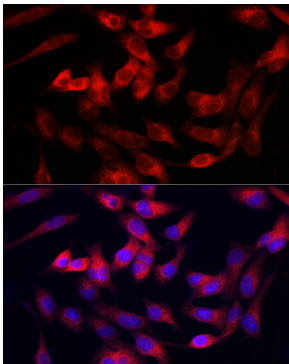
Store at -20°C. Avoid freeze / thaw cycles.

Buffer: PBS with 0.09% Sodium azide,50% glycerol,pH7.3.

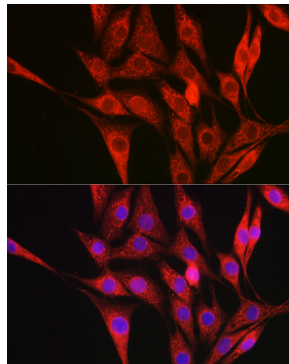
Validation Data



Western blot analysis of lysates from HeLa cells using Collagen III alpha 1/COL3A1 Rabbit pAb(A3795) at 1:10000 dilution.
Secondary antibody: HRP Goat Anti-Rabbit IgG (H+L) (AS014) at 1:10000 dilution.
Lysates/proteins: 25 µg per lane.
Blocking buffer: 3% nonfat dry milk in TBST.
Detection: ECL Basic Kit (RM00020).
Exposure time: 90s.



Immunofluorescence analysis of RD cells using Collagen III alpha 1/COL3A1 Rabbit pAb (A3795) at dilution of 1:100. Secondary antibody: Cy3 Goat Anti-Rabbit IgG (H+L) (AS007) at 1:500 dilution. Blue: DAPI for nuclear staining.



Immunofluorescence analysis of NIH/3T3 cells using Collagen III alpha 1/COL3A1 Rabbit pAb (A3795) at dilution of 1:100. Secondary antibody: Cy3 Goat Anti-Rabbit IgG (H+L) (AS007) at 1:500 dilution. Blue: DAPI for nuclear staining.