

NUDEL/NDEL1 Rabbit mAb

Catalog No.: A3799 **Recombinant**

Basic Information

Observed MW

40kDa

Calculated MW

38kDa

Category

Primary antibody

Applications

ELISA, WB

Cross-Reactivity

Human, Mouse, Rat

CloneNo number

ARC0835

Background

Enables identical protein binding activity. Involved in chromosome segregation; positive regulation of GTPase activity; and regulation of intracellular protein transport. Located in kinetochore. Biomarker of schizophrenia.

Recommended Dilutions

WB 1:500 - 1:2000

Immunogen Information

Gene ID

81565

Swiss Prot

Q9GZM8

Immunogen

A synthetic peptide corresponding to a sequence within amino acids 1-100 of human NUDEL/NDEL1 (Q9GZM8).

Synonyms

EOPA; NDE2; NUDEL; MITAP1; NDE1L1; NUDEL/NDEL1

Contact

 | 400-999-6126

 | cn.market@abclonal.com.cn

 | www.abclonal.com.cn

Product Information

Source

Rabbit

Isotype

IgG

Purification

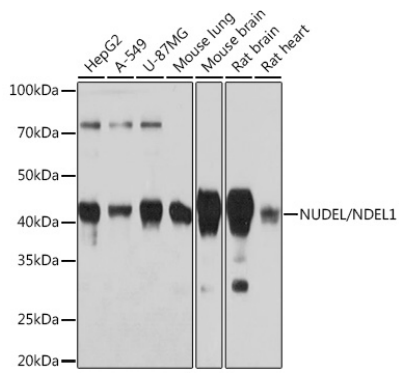
Affinity purification

Storage

Store at -20°C. Avoid freeze / thaw cycles.

Buffer: PBS with 0.02% sodium azide, 0.05% BSA, 50% glycerol, pH7.3.

Validation Data



Western blot analysis of extracts of various cell lines, using NUDEL/NDEL1 Rabbit mAb (A3799) at 1:1000 dilution.

Secondary antibody: HRP Goat Anti-Rabbit IgG (H+L) (AS014) at 1:10000 dilution.

Lysates/proteins: 25µg per lane.

Blocking buffer: 3% nonfat dry milk in TBST.

Detection: ECL Basic Kit (RM00020).

Exposure time: 3min.