

RACK1 Rabbit mAb

Catalog No.: A3808

Recombinant

1 Publications

Basic Information

Observed MW

32kDa

Calculated MW

35kDa

Category

Primary antibody

Applications

WB, ELISA

Cross-Reactivity

Human, Mouse, Rat

CloneNo number

ARC0837

Background

Enables several functions, including cyclin binding activity; enzyme binding activity; and protein domain specific binding activity. Involved in several processes, including positive regulation of hydrolase activity; regulation of cellular protein metabolic process; and regulation of signal transduction. Located in several cellular components, including midbody; perinuclear region of cytoplasm; and phagocytic cup. Part of IRE1-RACK1-PP2A complex.

Recommended Dilutions

WB 1:1000 - 1:6000

ELISA Recommended starting concentration is 1 µg/mL. Please optimize the concentration based on your specific assay requirements.

Immunogen Information

Gene ID

10399

Swiss Prot

P63244

Immunogen

Recombinant protein (or fragment). This information is considered to be commercially sensitive.

Synonyms

H12.3; HLC-7; PIG21; GNB2L1; Gnb2-rs1; RACK1

Contact

☎ | 400-999-6126

✉ | cn.market@abclonal.com.cn

🌐 | www.abclonal.com.cn

Product Information

Source

Rabbit

Isotype

IgG

Purification

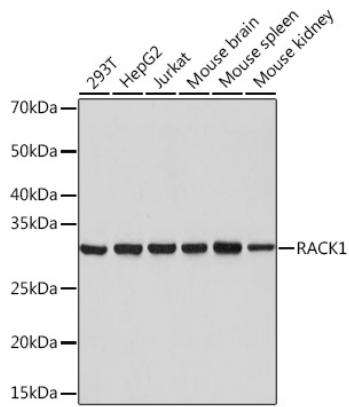
Affinity purification

Storage

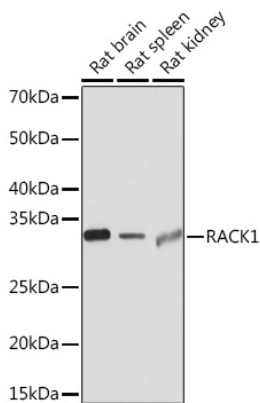
Store at -20°C. Avoid freeze / thaw cycles.

Buffer: PBS containing 50% glycerol and 0.05% BSA, preserved with proclin300 or sodium azide (as specified on the Certificate of Analysis), pH 7.3.

Validation Data



Western blot analysis of various lysates using RACK1 Rabbit mAb (A3808) at 1:1000 dilution. Secondary antibody: HRP-conjugated Goat anti-Rabbit IgG (H+L) (AS014) at 1:10000 dilution. Lysates/proteins: 25µg per lane. Blocking buffer: 3% nonfat dry milk in TBST. Detection: ECL Basic Kit (RM00020). Exposure time: 1s.



Western blot analysis of various lysates using RACK1 Rabbit mAb (A3808) at 1:1000 dilution. Secondary antibody: HRP-conjugated Goat anti-Rabbit IgG (H+L) (AS014) at 1:10000 dilution. Lysates/proteins: 25µg per lane. Blocking buffer: 3% nonfat dry milk in TBST. Detection: ECL Basic Kit (RM00020). Exposure time: 10s.