

# DDB1 Rabbit pAb

Catalog No.: A3827

## Basic Information

### Observed MW

127kDa

### Calculated MW

127kDa

### Category

Primary antibody

### Applications

ELISA,WB,IHC-P,IP

### Cross-Reactivity

Human, Mouse, Rat

## Background

The protein encoded by this gene is the large subunit (p127) of the heterodimeric DNA damage-binding (DDB) complex while another protein (p48) forms the small subunit. This protein complex functions in nucleotide-excision repair and binds to DNA following UV damage. Defective activity of this complex causes the repair defect in patients with xeroderma pigmentosum complementation group E (XPE) - an autosomal recessive disorder characterized by photosensitivity and early onset of carcinomas. However, it remains for mutation analysis to demonstrate whether the defect in XPE patients is in this gene or the gene encoding the small subunit. In addition, Best vitelliform macular dystrophy is mapped to the same region as this gene on 11q, but no sequence alternations of this gene are demonstrated in Best disease patients. The protein encoded by this gene also functions as an adaptor molecule for the cullin 4 (CUL4) ubiquitin E3 ligase complex by facilitating the binding of substrates to this complex and the ubiquitination of proteins.

## Recommended Dilutions

<b>WB</b>	1:500 - 1:2000
<b>IHC-P</b>	1:100 - 1:500
<b>IP</b>	0.5µg-4µg antibody for 200µg-400µg extracts of whole cells

## Immunogen Information

### Gene ID

1642

### Swiss Prot

Q16531

### Immunogen

A synthetic peptide corresponding to a sequence within amino acids 1000-1140 of human DDB1 (NP\_001914.3).

### Synonyms

XPE; DDBA; XAP1; XPCE; XPE-BF; UV-DDB1; WHIKERS; DDB1

## Contact

	400-999-6126
	cn.market@abclonal.com.cn
	www.abclonal.com.cn

## Product Information

### Source

Rabbit

### Isotype

IgG

### Purification

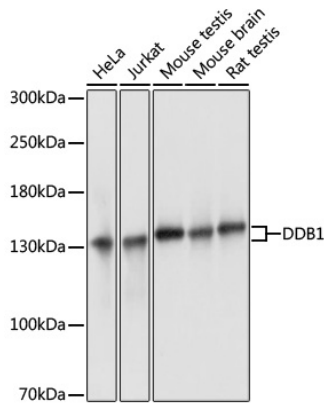
Affinity purification

### Storage

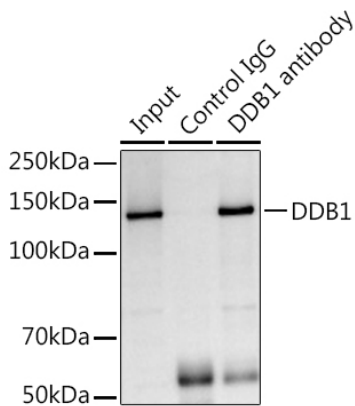
Store at -20°C. Avoid freeze / thaw cycles.

Buffer: PBS with 0.02% sodium azide,50% glycerol,pH7.3.

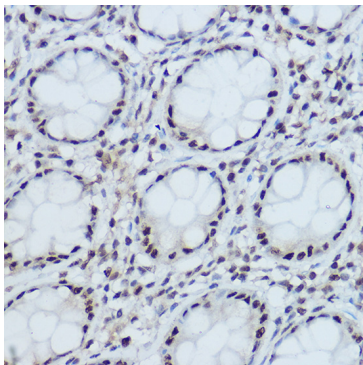
## Validation Data



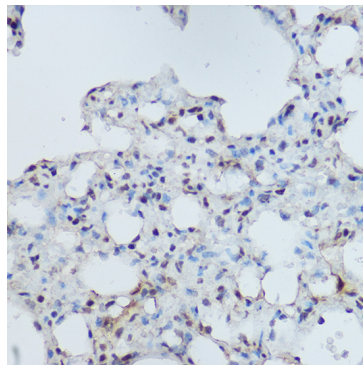
Western blot analysis of various lysates using DDB1 Rabbit pAb (A3827) at 1:3000 dilution.  
Secondary antibody: HRP Goat Anti-Rabbit IgG (H+L) (AS014) at 1:10000 dilution.  
Lysates/proteins: 25µg per lane.  
Blocking buffer: 3% nonfat dry milk in TBST.  
Detection: ECL Basic Kit (RM00020).  
Exposure time: 1s.



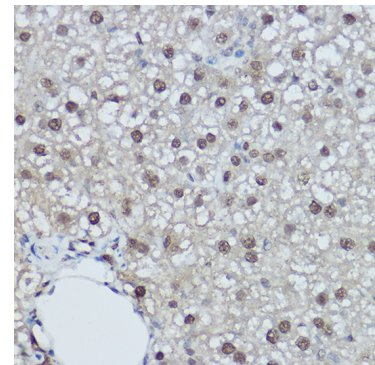
Immunoprecipitation analysis of 300 µg extracts of Jurkat cells using 3 µg DDB1 antibody (A3827).  
Western blot was performed from the immunoprecipitate using DDB1 antibody (A3827) at a dilution of 1:1000.



Immunohistochemistry analysis of paraffin-embedded human colon using DDB1 Rabbit pAb (A3827) at dilution of 1:300 (40x lens). Perform high pressure antigen retrieval with 10 mM citrate buffer pH 6.0 before commencing with IHC staining protocol.



Immunohistochemistry analysis of paraffin-embedded mouse lung using DDB1 Rabbit pAb (A3827) at dilution of 1:300 (40x lens). Perform high pressure antigen retrieval with 10 mM citrate buffer pH 6.0 before commencing with IHC staining protocol.



Immunohistochemistry analysis of paraffin-embedded rat liver using DDB1 Rabbit pAb (A3827) at dilution of 1:300 (40x lens). Perform high pressure antigen retrieval with 10 mM citrate buffer pH 6.0 before commencing with IHC staining protocol.