

DUSP9 Rabbit pAb

Catalog No.: A3839

Basic Information

Observed MW

41kDa

Calculated MW

42kDa

Category

Primary antibody

Applications

ELISA,WB,IF/ICC

Cross-Reactivity

Human, Mouse

Background

The protein encoded by this gene is a member of the dual specificity protein phosphatase subfamily. These phosphatases inactivate their target kinases by dephosphorylating both the phosphoserine/threonine and phosphotyrosine residues. They negatively regulate members of the mitogen-activated protein (MAP) kinase superfamily (MAPK/ERK, SAPK/JNK, p38), which is associated with cellular proliferation and differentiation. Different members of the family of dual specificity phosphatases show distinct substrate specificities for various MAP kinases, different tissue distribution and subcellular localization, and different modes of inducibility of their expression by extracellular stimuli. This gene product shows selectivity for members of the ERK family of MAP kinases and is localized to the cytoplasm and nucleus. Aberrant expression of this gene is associated with type 2 diabetes and cancer progression in several cell types. Alternate splicing results in multiple transcript variants.

Recommended Dilutions

WB	1:200 - 1:2000
IF/ICC	1:20 - 1:100

Immunogen Information

Gene ID

1852

Swiss Prot

Q99956

Immunogen

Recombinant fusion protein containing a sequence corresponding to amino acids 1-200 of human DUSP9 (NP_001386.1).

Synonyms

MKP4; MKP-4; DUSP9

Contact

☎ | 400-999-6126

✉ | cn.market@abclonal.com.cn

🌐 | www.abclonal.com.cn

Product Information

Source

Rabbit

Isotype

IgG

Purification

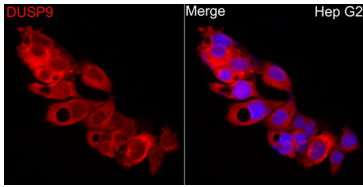
Affinity purification

Storage

Store at -20°C. Avoid freeze / thaw cycles.

Buffer: PBS with 0.01% thimerosal,50% glycerol,pH7.3.

Validation Data



Immunofluorescence analysis of HepG2 cells using DUSP9 Rabbit pAb (A3839) at dilution of 1:200 (40x lens). Secondary antibody: Cy3 Goat Anti-Rabbit IgG (H+L) (AS007) at 1:500 dilution. Blue: DAPI for nuclear staining.