

GATM Rabbit pAb

Catalog No.: A3878 **1 Publications**

Basic Information

Observed MW

57kDa

Calculated MW

48kDa

Category

Primary antibody

Applications

WB

Cross-Reactivity

Human

Background

This gene encodes a mitochondrial enzyme that belongs to the amidinotransferase family. This enzyme is involved in creatine biosynthesis, whereby it catalyzes the transfer of a guanido group from L-arginine to glycine, resulting in guanidinoacetic acid, the immediate precursor of creatine. Mutations in this gene cause arginine:glycine amidinotransferase deficiency, an inborn error of creatine synthesis characterized by cognitive disability, language impairment, and behavioral disorders.

Recommended Dilutions

WB 1:500 - 1:1000

Immunogen Information

Gene ID

2628

Swiss Prot

P50440

Immunogen

A synthetic peptide of human GATM

Synonyms

AT; RFS; AGAT; FRTS; CCDS3; FRTS1; GATM

Contact

 | 400-999-6126

 | cn.market@abclonal.com.cn

 | www.abclonal.com.cn

Product Information

Source

Rabbit

Isotype

IgG

Purification

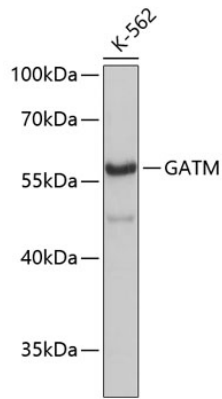
Affinity purification

Storage

Store at 4°C. Avoid freeze / thaw cycles.

Buffer: PBS with 0.02% sodium azide, pH7.3.

Validation Data



Western blot analysis of extracts of K-562 cells, using GATM antibody (A3878).
Secondary antibody: HRP Goat Anti-Rabbit IgG (H+L) (AS014) at 1:10000 dilution.
Lysates/proteins: 25µg per lane.
Blocking buffer: 3% nonfat dry milk in TBST.