

# Glutaminase (GLS) Rabbit pAb

Catalog No.: A3885

2 Publications

## Basic Information

**Observed MW**

65-73kDa

**Calculated MW**

73kDa

**Category**

Primary antibody

**Applications**

ELISA,WB,IF/ICC

**Cross-Reactivity**

Human, Mouse, Rat

## Background

This gene encodes the K-type mitochondrial glutaminase. The encoded protein is an phosphate-activated amidohydrolase that catalyzes the hydrolysis of glutamine to glutamate and ammonia. This protein is primarily expressed in the brain and kidney plays an essential role in generating energy for metabolism, synthesizing the brain neurotransmitter glutamate and maintaining acid-base balance in the kidney. Alternate splicing results in multiple transcript variants.

## Recommended Dilutions

WB 1:500 - 1:1000

IF/ICC 1:50 - 1:200

## Immunogen Information

**Gene ID**

2744

**Swiss Prot**

O94925

**Immunogen**

Recombinant fusion protein containing a sequence corresponding to amino acids 610-669 of human Glutaminase (Glutaminase (GLS)) (NP\_055720.3).

**Synonyms**

GAC; GAM; KGA; GLS1; AAD20; DEE71; GDPAG; CASGID; EIEE71; Glutaminase (GLS)

## Contact

 | 400-999-6126 | [cn.market@abclonal.com.cn](mailto:cn.market@abclonal.com.cn) | [www.abclonal.com.cn](http://www.abclonal.com.cn)

## Product Information

**Source**

Rabbit

**Isotype**

IgG

**Purification**

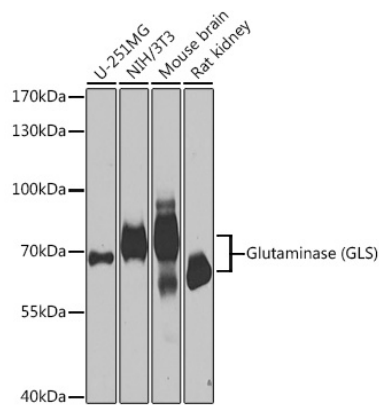
Affinity purification

**Storage**

Store at -20°C. Avoid freeze / thaw cycles.

Buffer: PBS with 0.05% proclin300,50% glycerol,pH7.3.

## Validation Data



Western blot analysis of extracts of various cell lines, using Glutaminase (Glutaminase (GLS)) antibody (A3885) at 1:1000 dilution.

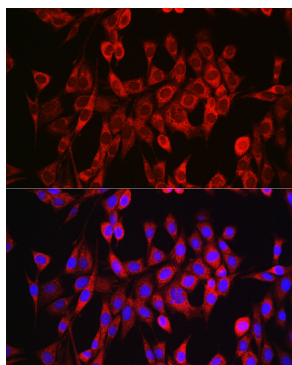
Secondary antibody: HRP Goat Anti-Rabbit IgG (H+L) (AS014) at 1:10000 dilution.

Lysates/proteins: 25µg per lane.

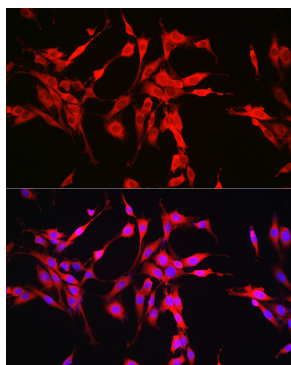
Blocking buffer: 3% nonfat dry milk in TBST.

Detection: ECL Basic Kit (RM00020).

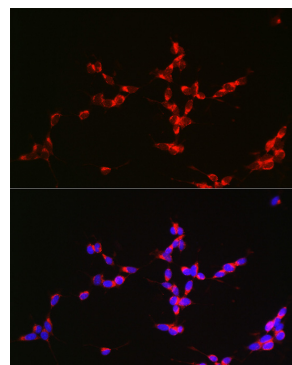
Exposure time: 30s.



Immunofluorescence analysis of NIH/3T3 cells using Glutaminase (GLS) antibody (A3885) at dilution of 1:150. Blue: DAPI for nuclear staining.



Immunofluorescence analysis of PC-12 cells using Glutaminase (GLS) antibody (A3885) at dilution of 1:150. Blue: DAPI for nuclear staining.



Immunofluorescence analysis of SH-SY5Y cells using Glutaminase (GLS) antibody (A3885) at dilution of 1:150. Blue: DAPI for nuclear staining.