

GPR17 Rabbit pAb

Catalog No.: A3897

Basic Information

Observed MW

41kDa

Calculated MW

41kDa

Category

Primary antibody

Applications

WB, ELISA

Cross-Reactivity

Human, Mouse, Rat

Background

Predicted to enable G protein-coupled receptor activity. Predicted to be involved in positive regulation of Rho protein signal transduction and positive regulation of cytosolic calcium ion concentration involved in phospholipase C-activating G protein-coupled signaling pathway. Predicted to act upstream of or within negative regulation of inflammatory response to antigenic stimulus. Predicted to be located in plasma membrane. Predicted to be integral component of plasma membrane.

Recommended Dilutions

WB 1:500 - 1:1000

ELISA Recommended starting concentration is 1 µg/mL. Please optimize the concentration based on your specific assay requirements.

Immunogen Information

Gene ID

2840

Swiss Prot

Q13304

Immunogen

Recombinant protein (or fragment). This information is considered to be commercially sensitive.

Synonyms

GPR17

Contact

☎ | 400-999-6126

✉ | cn.market@abclonal.com.cn

🌐 | www.abclonal.com.cn

Product Information

Source

Rabbit

Isotype

IgG

Purification

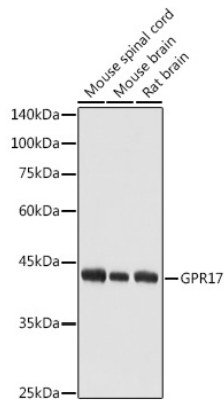
Affinity purification

Storage

Store at -20°C. Avoid freeze / thaw cycles.

Buffer: PBS with 0.01% thimerosal, 50% glycerol, pH7.3.

Validation Data



Western blot analysis of various lysates using GPR17 Rabbit pAb (A3897) at 1:1000 dilution.
Secondary antibody: HRP-conjugated Goat anti-Rabbit IgG (H+L) (AS014) at 1:10000 dilution.
Lysates/proteins: 25 μ g per lane.
Blocking buffer: 3% nonfat dry milk in TBST.
Detection: ECL Basic Kit (RM00020).
Exposure time: 1s.