

GPS2 Rabbit pAb

Catalog No.: A3901 **1 Publications**

Basic Information

Observed MW

37kDa

Calculated MW

20kDa

Category

Primary antibody

Applications

ELISA, WB, IP

Cross-Reactivity

Human, Mouse, Rat

Background

Enables transcription coactivator activity and transcription corepressor activity. Involved in several processes, including negative regulation of protein K63-linked ubiquitination; regulation of signal transduction; and regulation of transcription by RNA polymerase II. Located in mitochondrion and nucleus. Part of transcription repressor complex. Orthologous to human GPS2 (G protein pathway suppressor 2).

Recommended Dilutions

WB 1:500 - 1:2000

IP 0.5µg-4µg antibody for
200µg-400µg extracts of
whole cells

Immunogen Information

Gene ID

56310

Swiss Prot

Immunogen

A synthetic peptide corresponding to a sequence within amino acids 200 to the C-terminus of mouse GPS2 (NP_062700.2).

Synonyms

GPS-2; GPS2

Contact

 | 400-999-6126

 | cn.market@abclonal.com.cn

 | www.abclonal.com.cn

Product Information

Source

Rabbit

Isotype

IgG

Purification

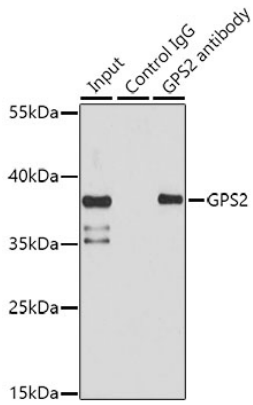
Affinity purification

Storage

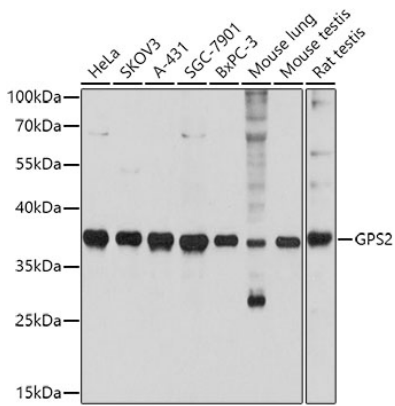
Store at -20°C. Avoid freeze / thaw cycles.

Buffer: PBS with 0.01% thimerosal, 50% glycerol, pH7.3.

Validation Data



Immunoprecipitation analysis of 150 µg extracts of HeLa cells using 3 µg GPS2 antibody (A3901). Western blot was performed from the immunoprecipitate using GPS2 antibody (A3901) at a dilution of 1:1000.



Western blot analysis of various lysates using GPS2 Rabbit pAb (A3901) at 1:3000 dilution. Secondary antibody: HRP-conjugated Goat anti-Rabbit IgG (H+L) (AS014) at 1:10000 dilution. Lysates/proteins: 25µg per lane. Blocking buffer: 3% nonfat dry milk in TBST. Detection: ECL Basic Kit (RM00020). Exposure time: 30s.