

GPX7 Rabbit pAb

Catalog No.: A3902 **2 Publications**

Basic Information

Observed MW

21kDa

Calculated MW

21kDa

Category

Primary antibody

Applications

ELISA, WB

Cross-Reactivity

Human, Mouse, Rat

Background

Enables catalase activity. Predicted to be involved in cellular response to oxidative stress. Located in endoplasmic reticulum.

Recommended Dilutions

WB 1:500 - 1:2000

Immunogen Information

Gene ID

2882

Swiss Prot

Q96SL4

Immunogen

Recombinant fusion protein containing a sequence corresponding to amino acids 20-187 of human GPX7 (NP_056511.2).

Synonyms

GPX6; CL683; GPx-7; NPGPx; GSHPx-7; GPX7

Contact

 | 400-999-6126

 | cn.market@abclonal.com.cn

 | www.abclonal.com.cn

Product Information

Source

Rabbit

Isotype

IgG

Purification

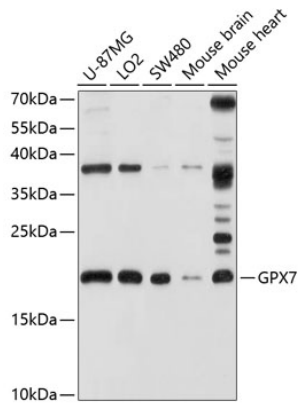
Affinity purification

Storage

Store at -20°C. Avoid freeze / thaw cycles.

Buffer: PBS with 0.02% sodium azide, 50% glycerol, pH 7.3.

Validation Data



Western blot analysis of extracts of various cell lines, using GPX7 antibody (A3902) at 1:1000 dilution.
Secondary antibody: HRP Goat Anti-Rabbit IgG (H+L) (AS014) at 1:10000 dilution.
Lysates/proteins: 25 μ g per lane.
Blocking buffer: 3% nonfat dry milk in TBST.
Detection: ECL Basic Kit (RM00020).
Exposure time: 30s.