

Gelsolin Rabbit pAb

Catalog No.: A3903

Basic Information

Observed MW

86kDa

Calculated MW

86kDa

Category

Primary antibody

Applications

WB,FC

Cross-Reactivity

Human, Mouse, Rat

Background

The protein encoded by this gene binds to the "plus" ends of actin monomers and filaments to prevent monomer exchange. The encoded calcium-regulated protein functions in both assembly and disassembly of actin filaments. Defects in this gene are a cause of familial amyloidosis Finnish type (FAF). Multiple transcript variants encoding several different isoforms have been found for this gene.

Recommended Dilutions

WB 1:500 - 1:2000

FC 1:20 - 1:50

Immunogen Information

Gene ID

2934

Swiss Prot

P06396

Immunogen

A synthetic peptide of human Gelsolin

Synonyms

ADF; AGEL; Gelsolin

Contact

 | 400-999-6126

 | cn.market@abclonal.com.cn

 | www.abclonal.com.cn

Product Information

Source

Rabbit

Isotype

IgG

Purification

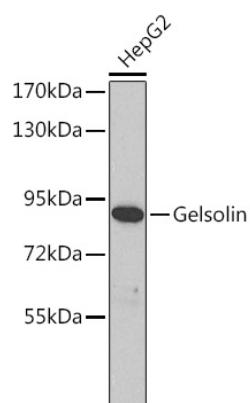
Affinity purification

Storage

Store at 4°C. Avoid freeze / thaw cycles.

Buffer: PBS with 0.02% sodium azide, pH7.3.

Validation Data



Western blot analysis of extracts of HepG2 cells, using Gelsolin antibody (A3903).
Secondary antibody: HRP Goat Anti-Rabbit IgG (H+L) (AS014) at 1:10000 dilution.
Lysates/proteins: 25µg per lane.
Blocking buffer: 3% nonfat dry milk in TBST.